

# Classification Analysis for Local Mesh Patterns using Medical Image Segmentation

**Dr. Nookala Venu**

Professor, Department of Electronics and Communication Engineering, Balaji Institute of Technology and Science,  
Warangal-506 331, Telangana, India  
Corresponding Author Mail id: venunookala@gmail.com

## Abstract:

The objective of this paper is to develop an effective robust fuzzy c-means clustering brain images. Local mesh patterns feature extractor is proposed for medical image segmentation. The local region of image is represented by dataset, which are evaluated by taking into consideration the magnitude of local difference between the center pixel and its neighbors. First, image split in to sub blocks and novel objective function features are extracted from each given dataset.. Once the image has been split into blocks of roughly homogeneous texture, we apply an agglomerative procedure to merge similar adjacent regions until one of the two stopping criteria is satisfied. At each stage we merge the pair of adjacent regions which have the largest merger importance value. Based on merger importance the regions are merged and then form the segmented regions for medical image segmentation application. Experimental results are tested on benchmark MRI database for medical image segmentation application. Results after being investigated, proposed method shows a significant improvement for segmentation of images.

**Keywords:** MRI, LBP, Classification, Texture.

## 1. Introduction

Nowadays lot of medical images is available and this data need to be stored for particular time period to maintain the medical data about the patient [1-2]. But with data medical hospitals are not getting any benefit from the storage. From this an idea of using this data for automatic medical applications like medical image segmentation, medical image retrieval etc. In medical image segmentation, we will segment the certain regions for analysis purpose [3-5]. Initially, cluster based medical segmentation like k-mean, fuzzy c-mans algorithms are proposed for medical image segmentation. In recent years, researchers using the feature based algorithms for medical image segmentation. Based on the literature, we motivated to work in the direction of medical image segmentation using feature descriptors [5-8]. Now, a concise review of the related literature available, targeted for development of our algorithms is given here. Local binary pattern features have emerged as a silver lining in the field of texture retrieval. Ojala et al. proposed LBP [11-12] which are converted to rotational invariant for texture classification in [13-15]. Rotational invariant texture classification using feature distributions is proposed in [16-18]. The combination of Gabor filter and LBP for texture segmentation [19-21] and rotational invariant texture classification using LBP variance with global matching [22-24] has also been reported. Liao et al. proposed the dominant local binary patterns (DLBP) for texture classification [25]. Guo et al. developed the completed LBP scheme for texture classification [26]. LBP operator on facial expression analysis and recognition is successfully reported in [27] and [9]. Xi Li et al. proposed multi-scale heat kernel based face representation, for heat

kernels that performs well in characterizing the topological structural information of face appearance [28-29]. Further, the local binary pattern (LBP) descriptor is incorporated into the multistate heat kernel face representation for capturing texture information of face appearance [30]. Face recognition under different lighting conditions by the use of local ternary patterns is discussed in [31-33] where emphasis lays on the issue of robustness of the local patterns. The background modeling and detection using LBP, extended LBP for shape localization and LBP for interest region description has been reported in [34-38] and [39-42] respectively. Zhao et al. proposed the local spatiotemporal descriptors using LBP to represent and recognize spoken isolated phrases based solely on visual input [43-46]. Spatiotemporal local binary patterns extracted from mouth regions are used for describing isolated phrase sequences. Unay et al. proposed the local structure-based region-of-interest retrieval in brain MR images [47-51]. Yao and Chen proposed the local edge patterns for texture retrieval [52-54] where LEP value is computed using an edge obtained by applying the Sobel edge detector to intensity gray level and then LEP feature are extracted to describe the spatial structure of the local texture according to the organization of the edge pixels in a neighborhood [55-57]. The LBP operator was introduced by Ojala *et al.* [58-59] for texture classification. Success in terms of speed (no need to tune any parameters) and performance is reported in many research areas such as texture classification [60-62], face recognition [63-65], object tracking, bio-medical image retrieval and finger print recognition. Given a center pixel in the 3×3 pattern, LBP value is computed by comparing its gray scale value with its neighborhoods based on Eq. (1) and Eq. (2):

$$LBP_{P,R} = \sum_{i=1}^P 2^{(i-1)} \times f(I(g_i) - I(g_c)) \quad (1)$$

$$f(x) = \begin{cases} 1 & x \geq 0 \\ 0 & else \end{cases} \quad (2)$$

Where  $I(g_c)$  denotes the gray value of the center pixel,  $I(g_i)$  is the gray value of its neighbors,  $P$  stands for the number of neighbors and  $R$ , the radius of the neighborhood [66].

Fig. 1 shows an example of obtaining an LBP from a given 3×3 pattern. The histograms of these patterns extract the distribution of edges in an image [67].

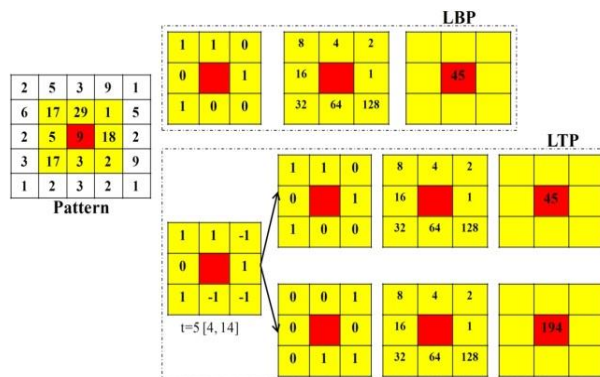


Fig. 1: Example of obtaining LBP and LTP for the 3×3 pattern

Tan and Triggs [11] extended the LBP to three valued code called local ternary patterns (LTP), in which gray values in the zone of width  $\pm t$  around  $g_c$  are quantized to zero, those above  $(g_c+t)$  are quantized to  $+1$  and those below  $(g_c-t)$  are quantized to  $-1$ , i.e., the indicator  $f(x)$  is replaced with 3-valued function (Eq. 3) and binary LBP code is replaced by a ternary LTP code as shown in Fig. 1.

$$\bar{f}(x, g_c, t) = \begin{cases} +1, & x \geq g_c + t \\ 0, & |x - g_c| < t \\ -1, & x \leq g_c - t \end{cases} \Big|_{x=(g_p - g_c)} \quad (3)$$

More details about LTP can be found in [68].

After computing the LP (LBP or LTP) for each pixel  $(j, k)$ , the whole image is represented by building a histogram as shown in Eq. (4).

$$H_{LP}(l) = \sum_{j=1}^{N_1} \sum_{k=1}^{N_2} f(LP(j, k), l); l \in [0, (2^P - 1)] \quad (4)$$

$$f(x, y) = \begin{cases} 1 & x = y \\ 0 & \text{else} \end{cases} \quad (5)$$

Where the size of input image is  $N_1 \times N_2$ .

For the local pattern with  $P$  neighboring pixels, there are  $2^P$  (0 to  $2^P-1$ ) possible values for both LBP and LMeP, resulting in a feature vector of length  $2^P$ . A high computational cost is involved in extracting such a feature vector. Thus, uniform patterns [69] are considered to reduce the computational cost. A uniform pattern refers to a circular binary representation having limited discontinuities. In this paper, patterns with two or less discontinuities in the circular binary representation are termed as uniform while rest of the patterns are termed as non-uniform. Thus, the distinct uniform patterns for a given query image would be  $P(P-1)+2$ . The possible uniform patterns for  $P=8$  can be seen in [70].

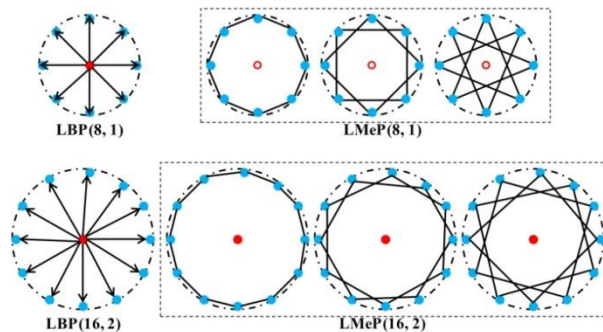


Fig. 2: The LBP and the first three LMeP calculations for a given (P, R).

After identifying the local pattern,  $PTN$  (the LBP or the first three LMePs) the whole image is represented by building a histogram using Eq. (4)

$$H_s(l) = \frac{1}{N_1 \times N_2} \sum_{j=1}^{N_1} \sum_{k=1}^{N_2} f_2(PTN(j, k), l); l \in [0, P(P-1)+2] \quad (7)$$

$$f_2(x, y) = \begin{cases} 1 & \text{if } x = y \\ 0 & \text{else} \end{cases} \quad (8)$$

Where,  $N_1 \times N_2$  represents the size of input image.

Fig.2 illustrates the feature maps obtained by applying the LBP and the first three LMePs operators on referenced MR image [71]. The experimental results demonstrate that the proposed LMeP shows better performance as compared to LBP, indicating that it can capture more edge information than LBP for biomedical image retrieval [72].

### 3. Proposed Algorithm

*Algorithm:*

*Input: Image; Output: Retrieval result*

1. Load the gray scale image
2. Calculate the LMeP features from an image.
3. Divide the LMeP map in to sub blocks.
4. Apply the similarity between the sub blocks.
5. Based on the similarity merge the sub blocks.
6. Form the regions (segments) for final segmentation.

### 4. Results and Discussions

In order to verify the effectiveness of the proposed algorithm, experiments were conducted on two brain MRIs [19]. The performance of the proposed algorithm is compared with the other existing FCM variant methods in terms of score, number of iterations (NI) and computational time (CT) on OASIS-MRI dataset.

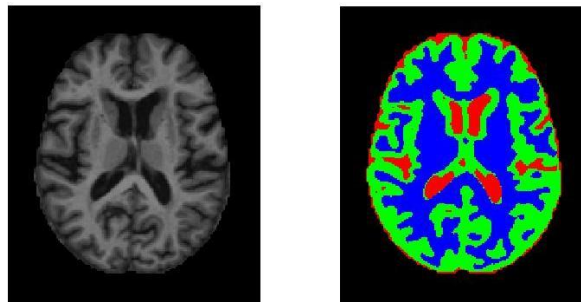


Fig. 3: Segmentation results of proposed method.

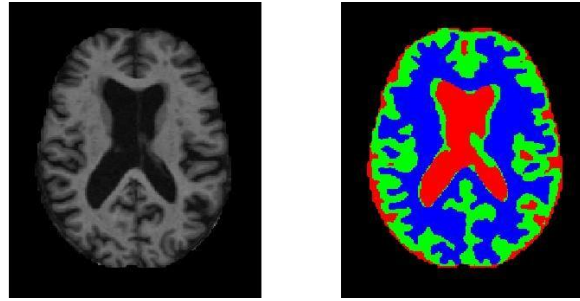


Fig. 4: Segmentation results of proposed method.

Fig. 3 and Fig. 4 illustrate the segmentation results of the proposed algorithm. Table 1 to table 6 illustrates the results of proposed algorithm for image segmentation. The results after being investigated, the proposed method outperforms the other existing method in terms of score, number of iterations and time on benchmark database.

Table 1: Comparison of various techniques in terms of score on Image (a) at different Gaussian noise  
Cl: Cluster

Method	Gaussian Noise (%)											
	5%			10%			15%			20%		
	CI-1	CI-2	CI-3	CI-1	CI-2	CI-3	CI-1	CI-2	CI-3	CI-1	CI-2	CI-3
LBP	0.66	0.79	0.86	0.58	0.72	0.81	0.53	0.69	0.80	0.49	0.65	0.78
LMeP	0.68	0.82	0.88	0.59	0.74	0.84	0.56	0.72	0.82	0.53	0.68	0.81

Table 2: Comparison of various techniques in terms of score on Image (b) at different Gaussian noise  
Cl: Cluster

Method	Gaussian Noise (%)											
	5%			10%			15%			20%		
	CI-1	CI-2	CI-3	CI-1	CI-2	CI-3	CI-1	CI-2	CI-3	CI-1	CI-2	CI-3
LBP	0.73	0.80	0.87	0.58	0.66	0.80	0.54	0.69	0.80	0.51	0.66	0.78
LMeP	0.78	0.84	0.89	0.59	0.68	0.82	0.58	0.74	0.83	0.54	0.67	0.80

Table 3: Comparison of various techniques in terms of score on Image (a) at different Salt-Pepper noise  
Cl: Cluster

Method	Salt-Pepper Noise (%)											
	5%			10%			15%			20%		
	CI-1	CI-2	CI-3	CI-1	CI-2	CI-3	CI-1	CI-2	CI-3	CI-1	CI-2	CI-3
LBP	0.72	0.76	0.82	0.62	0.69	0.74	0.56	0.66	0.77	0.54	0.68	0.74
LMeP	0.76	0.79	0.84	0.64	0.73	0.77	0.58	0.69	0.79	0.57	0.69	0.76

Table 4: Comparison of various techniques in terms of score on Image (b) at different Salt-Pepper noise  
Cl: Cluster

Method	Salt-Pepper Noise (%)											
	5%			10%			15%			20%		
	CI-1	CI-2	CI-3	CI-1	CI-2	CI-3	CI-1	CI-2	CI-3	CI-1	CI-2	CI-3
LBP	0.72	0.76	0.82	0.62	0.69	0.74	0.56	0.66	0.77	0.54	0.68	0.74
LMeP	0.76	0.79	0.84	0.64	0.73	0.77	0.58	0.69	0.79	0.57	0.69	0.76

<b>LBP</b>	0.76	0.79	0.85	0.56	0.66	0.77	0.51	0.62	0.77	0.50	0.63	0.72
<b>LMeP</b>	0.79	0.82	0.88	0.59	0.69	0.81	0.56	0.66	0.80	0.54	0.66	0.74

Table 5: Comparison of various techniques in terms of number of iterations and execution time at different Gaussian noise on Image (a)

NI: Number of iterations; TM: Execution Time (Sec.)

Method	Gaussian Noise							
	5%		10%		15%		20%	
	NI	TM	NI	TM	NI	TM	NI	TM
<b>LBP</b>	28	0.65	30	0.68	24	0.50	23	0.48
<b>LMeP</b>	22	0.57	23	0.65	23	0.60	30	0.81

Table 6: Comparison of various techniques in terms of number of iterations and execution time at different Salt-Pepper Noise on Image (a)

NI: Number of iterations; TM: Execution Time (Sec.)

Method	Salt-Pepper Noise							
	5%		10%		15%		20%	
	NI	TM	NI	TM	NI	TM	NI	TM
<b>LBP</b>	31	0.62	35	0.60	26	0.49	26	0.46
<b>LMeP</b>	26	0.52	22	0.54	21	0.36	21	0.36

### 5. Conclusions

A novel methodology based on feature descriptors is proposed for medical image retrieval application. For feature extraction LMeP is used and then merging of sub blocks concept is used for segmentation. The performance of the proposed method is tested on benchmark database. The results after being investigated proposed method outperforms the other existing methods in terms of segmentation score.

### References

- [1] Vaigandla, K. K., & Venu, D. N. (2021). A survey on future generation wireless communications-5G: multiple access techniques, physical layer security, beamforming approach. *Journal of Information and Computational Science*, 11(9), 449-474.
- [2] Venu, D., Arun Kumar, A., & Vaigandla, K. K. (2022). Review of Internet of Things (IoT) for Future Generation Wireless Communications. *International Journal for Modern Trends in Science and Technology*, 8(03), 01-08.
- [3] Sujith, A. V. L. N., Swathi, R., Venkatasubramanian, R., Venu, N., Hemalatha, S., George, T., & Osman, S. M. (2022). Integrating nanomaterial and high-performance fuzzy-based machine learning approach for green energy conversion. *Journal of Nanomaterials*, 2022, 1-11.
- [4] Venu, N., & Anuradha, B. (2013, December). Integration of hyperbolic tangent and Gaussian kernels for fuzzy C-means algorithm with spatial information for MRI segmentation. In *2013 Fifth International Conference on Advanced Computing (ICoAC)* (pp. 280-285). IEEE.
- [5] Vaigandla, K. K., & Venu, D. N. (2021). Ber, snr and papr analysis of ofdma and sc-fdma. *GIS Science Journal*, ISSN, (1869-9391), 970-977.

- [6] Venu, N. (2014, April). Performance and evaluation of Guassian kernals for FCM algorithm with mean filtering based denoising for MRI segmentation. In *2014 International Conference on Communication and Signal Processing* (pp. 1680-1685). IEEE.
- [7] Karthik Kumar Vaigandla, D. (2021, November). Survey on Massive MIMO: Technology, Challenges, Opportunities and Benefits. *YMER*, 271-282.
- [8] Venu, N., & Anuradha, B. (2015). Multi-Kernels Integration for FCM algorithm for Medical Image Segmentation Using Histogram Analysis. *Indian Journal of Science and Technology*, 8(34), 1-8.
- [9] Venu, N., Yuvaraj, D., Barnabas Paul Gladly, J., Pattnaik, O., Singh, G., Singh, M., & Adigo, A. G. (2022). Execution of Multitarget Node Selection Scheme for Target Position Alteration Monitoring in MANET. *Wireless Communications and Mobile Computing*, 2022.
- [10] Venu, N., Swathi, R., Sarangi, S. K., Subashini, V., Arulkumar, D., Ralhan, S., & Debtera, B. (2022). Optimization of Hello Message Broadcasting Prediction Model for Stability Analysis. *Wireless Communications & Mobile Computing (Online)*, 2022.
- [11] Venu, D. N. (2015). Analysis of Xtrinsic Sense MEMS Sensors. *International Journal of Advanced Research in Electrical, Electronics and Instrumentation Engineering*, 4 (8), 7228-7234.
- [12] Venu, N., & Anuradha, B. (2013). A novel multiple-kernel based fuzzy c-means algorithm with spatial information for medical image segmentation. *International Journal of Image Processing (IJIP)*, 7(3), 286.
- [13] Nookala Venu, A. (2018). Local mesh patterns for medical image segmentation. *Asian Pacific Journal of Health Sciences*, 5(1), 123-127.
- [14] Venu, N., & Anuradha, B. (2013). PSNR Based Fuzzy Clustering Algorithms for MRI Medical Image Segmentation. *International Journal of Image Processing and Visual Communication*, 2(2), 01-07.
- [15] Thouti, S., Venu, N., Rinku, D. R., Arora, A., & Rajeswaran, N. (2022). Investigation on identify the multiple issues in IoT devices using Convolutional Neural Network. *Measurement: Sensors*, 24, 100509.
- [16] Venu, N., Revanesh, M., Supriya, M., Talawar, M. B., Asha, A., Isaac, L. D., & Ferede, A. W. (2022). Energy Auditing and Broken Path Identification for Routing in Large-Scale Mobile Networks Using Machine Learning. *Wireless Communications and Mobile Computing*, 2022.
- [17] Kesavaiah, D. C., Goud, T. R., Rao, Y. S., & Venu, N. (2019). Radiation effect to MHD oscillatory flow in a channel filled through a porous medium with heat generation. *Journal of Mathematical Control Science and Applications*, 5(2), 71-80.
- [18] Nookala Venu, B. A. (2015). Medical Image Segmentation Using Kernal Based Fuzzy C-Means Algorithm. *International Journal of Engineering Innovation & Research*, 4 (1), 207-212.
- [19] Nookala Venu, D., Kumar, A., & Rao, M. A. S. (2022). BOTNET Attacks Detection in Internet of Things Using Machine Learning. *Neuroquantology*, 20(4), 743-754.
- [20] Venu, N., & Anuradha, B. (2014, February). Multi-Hyperbolic Tangent Fuzzy C-means Algorithm for MRI Segmentation. In *Proceedings of International Conference on Advances in Communication, Network and Computing (CNC-2014)*, Elsevier (pp. 22-24).
- [21] Nookala Venu, S. W. (2022). A Wearable Medicines Recognition System using Deep Learning for People with Visual Impairment. *IJFANS*, 12(1), 2340-2348.
- [22] Nookala Venu, G. R. (2022). Smart Road Safety and Vehicle Accidents Prevention System for Mountain Road. *International Journal for Innovative Engineering Management and Research*, 11 (06), 209-214.
- [23] Nookala Venu, D., Kumar, A., & Rao, M. A. S. (2022). Smart Agriculture with Internet of Things and Unmanned Aerial Vehicles. *Neuroquantology*, 20(6), 9904-9914.
- [24] Nookala Venu, D., Kumar, A., & Rao, M. A. S. (2022). Internet of Things Based Pulse Oximeter For Health Monitoring System. *NeuroQuantology*, 20(5), 5056-5066.
- [25] Venu, D. N. DA (2021). Comparison of Traditional Method with watershed threshold segmentation Technique. *The International journal of analytical and experimental modal analysis*, 13, 181-187.

- [26] Dr.Nookala Venu, D. K. (2022). Investigation on Internet of Things (IoT):Technologies, Challenges and Applications in Healthcare. *International Journal of Research* , XI (II), 143-153.
- [27] Kesavaiah, D. C., Goud, T. R., Venu, N., & Rao, Y. S. (2021). MHD Effect on Convective Flow Of Dusty Viscous Fluid With Fraction In A Porous Medium And Heat Generation. *Journal of Mathematical Control Science and Applications*, 7(2).
- [28] Babu, K. R., Kesavaiah, D. C., Devika, B., & Venu, D. N. (2022). Radiation effect on MHD free convective heat absorbing Newtonian fluid with variable temperature. *NeuroQuantology*, 20(20), 1591-1599.
- [29] Kesavaiah, D. C., Ahmed, M., Reddy, K. V., & Venu, D. N. (2022). Heat and mass transfer effects over isothermal infinite vertical plate of Newtonian fluid with chemical reaction. *NeuroQuantology*, 20(20), 957-967.
- [30] Reddy, G. B., Kesavaiah, D. C., Reddy, G. B., & Venu, D. N. (2022). A note on heat transfer of MHD Jeffrey fluid over a stretching vertical surface through porous plate. *NeuroQuantology*, 20(15), 3472-3486.
- [31] Chenna Kesavaiah, D., Govinda Chowdary, P., Rami Reddy, G., & Nookala, V. (2022). Radiation, radiation absorption, chemical reaction and hall effects on unsteady flow past an isothermal vertical plate in a rotating fluid with variable mass diffusion with heat source. *NeuroQuantology*, 20(11), 800-815.
- [32] Kesavaiah, D. C., Prasad, M. K., Reddy, G. B., & Venu, N. (2022). Chemical Reaction, Heat and Mass Transfer Effects on MHD Peristaltic Transport in A Vertical Channel Through Space Porosity And Wall Properties. *NeuroQuantology*, , 20(11), 781-794.
- [33] Kesavaiah, D. C., Reddy, G. B., Kiran, A., & Venu, D. N. (2022). MHD effect on boundary layer flow of an unsteady incompressible micropolar fluid over a stretching surface. *NeuroQuantology*, , 20(8), 9442-9452.
- [34] Kesavaiah, D. C., Chowdary, P. G., Chitra, M., & Venu, D. N. (2022). Chemical reaction and MHD effects on free convection flow of a viscoelastic dusty gas through a semi infinite plate moving with radiative heat transfer. *NeuroQuantology*, 20(8), 9425-9434.
- [35] Mr.RadhaKrishna Karne, M. M. (2022). Applications of IoT on Intrusion Detection System with Deep Learning Analysis. *International Jourfor Innovative Engineering and Management Research* , 11 (06), 227-232.
- [36] Venu, N., & Anuradha, B. (2015). Two different multi-kernels for fuzzy C-means algorithm for medical image segmentation. *Int. J. Eng. Trends Technol.(IJETT)*, 20, 77-82.
- [37] Kesavaiah, D. C., Goud, T. R., Venu, N., & Rao, Y. S. (2017). Analytical Study on Induced Magnetic Field With Radiating Fluid Over A Porous Vertical Plate With Heat Generation. *Journal of Mathematical Control Science and Applications*, 3(2).
- [38] Dr. Nookala Venu, D. A. (2022, March). Routing and Self-Directed Vehicle Data Collection for Minimizing Data Loss in Underwater Network. *IJFANS International Journal of Food and Nutritional Sciences* , 170-183.
- [39] Dr. Nookala Venu, D. A. (2022). Fuzzy Based Resource Management Approach for the Selection of Biomass Material. *IJFANS International Journal of Food and Nutritional Sciences* , 12 (2), 83-97.
- [40] Ravindra Kumar Agarwal, D. S. (2022). A Novel Dates Palm Processing and Packaging Management System based on IoT and Deep Learning Approaches. *IJFANS International Journal of Food and Nutritional Sciences* , 11 (8), 1139-1151.
- [41] Manthur Sreeramulu Manjunath, P. K. (2022). An Enhanced Machine Learning Approach For Identifying Paddy Crop Blast Disease Management Using Fuzzy Logic. *IJFANS International Journal of Food and Nutritional Sciences* , 11 (8), 1152-1163.
- [42] K.P.Senthilkumar, K. C. (2022). Machine Learning Based Analysis and Classification of Rhizome Rot Disease in Turmeric Plants. *IJFANS International Journal of Food and Nutritional Sciences* , 11 (8), 1179-1190.
- [43] Sowmya Jagadeesan, B. B. (2022). A Perishable Food Monitoring Model Based on IoT and Deep Learning to Improve Food Hygiene and Safety Management. *IJFANS International Journal of Food and Nutritional Sciences* , 11 (8), 1164-1178.



- [44] Nookala Venu, S. K. (2022). Machine Learning Application for Medicine Distribution Management System. *IJFANS International Journal of Food and Nutritional Sciences* , 11 (1), 2323-2330.
- [45] Reddy, A. V., Kumar, A. A., Venu, N., & Reddy, R. V. K. (2022). On optimization efficiency of scalability and availability of cloud-based software services using scale rate limiting algorithm. *Measurement: Sensors*, 24, 100468.
- [46] Venu, D. (2022). Radiation Effect to Mhd Oscillatory Flow in a Channel Filled Through a Porous Medium with Heat Generation. *Radiation Effect to Mhd Oscillatory Flow in a Channel Filled Through a Porous Medium with Heat Generation (August 27, 2022)*.
- [47] Venu, D. N. (2022). Smart Agriculture Remote Monitoring System Using Low Power IOT Network. *IJFANS International Journal of Food and Nutritional Sciences* , 11 (6), 327-340.
- [48] Venu, D. N. (2022). IOT Surveillance Robot Using ESP-32 Wi-Fi CAM & Arduino. *IJFANS International Journal of Food and Nutritional Sciences* , 11 (5), 198-205.
- [49] Nookala Venu, N. S. (2022). Study and Experimental Analysis on FBMC and OFDM. *International Journal for Innovative Engineering and Management Research* , 11 (06), 49-53.
- [50] Sandhya rani B, S. K. (2022). Vehicle Fuel Level Monitor and Locate the Nearest Petrol Pumps using IoT. *International Journal for Innovative Engineering and Management Research* , 11 (06), 233-240.
- [51] Nookala Venu, K. A. (2022). Face Mask Detection System Using Python Open CV, *International Journal for Innovative Engineering and Management Research*, 11 (6), 28-32.
- [52] Nookala Venu, V. M. (2022). Alcohol Detection and Engine Locking System. *International Journal for Innovative Engineering and Management Research* , 11 (06), 157-160.
- [53] Nookala Venu, C. B. (2022). Wireless Night Vision Camera on War Spying Robot. *International Journal for Innovative Engineering and Management Research* , 11 (06), 123-128.
- [54] Venu, D. N. (2022). IOT Based Enabled Parking System in Public Areas. *IJFANS International Journal of Food and Nutritional Sciences*, 11 (4), 162-174.
- [55] Venu, D. N. (2022). IOT Based Speech Recognition System to Improve the Performance of Emotion Detection. *IJFANS International Journal of Food and Nutritional Sciences*, 11 (3), 92-102.
- [56] Dr.Nookala Venu, M. S. (2018). Local Maximum Edge Binary Patterns for Medical Image Segmentation. *International Journal of Engineering and Techniques*, 4 (1), 504-509.
- [57] Venu, N., & Anuradha, B. (2016). Multi-hyperbolic tangent fuzzy c-means algorithm with spatial information for MRI segmentation. *International Journal of Signal and Imaging Systems Engineering*, 9(3), 135-145.
- [58] Venu, N., & Anuradha, B. (2015). Hyperbolic Tangent Fuzzy C-Means Algorithm with Spatial Information for MRI Segmentation. *International Journal of Applied Engineering Research*, 10(7), 18241-18257.
- [59] Venu, N., & Anuradha, B. (2015, April). Two different multi-kernels integration with spatial information in fuzzy C-means algorithm for medical image segmentation. In *2015 International Conference on Communications and Signal Processing (ICCSP)* (pp. 0020-0025). IEEE.
- [60] Nookala Venu, B. (2015). MRI Image Segmentation Using Gaussian Kernel Based Fuzzy C-Means Algorithm. *International Journal of Electronics Communication and Computer Engineering* , 6 (1), 140-145.
- [61] Venu, N., & Anuradha, B. (2015). Evaluation of Integrated Hyperbolic Tangent and Gaussian Kernels Functions for Medical Image Segmentation. *International Journal of Applied Engineering Research*, 10(18), 38684-38689.
- [62] Anita Tuljappa, V. N. (2022). Dufour and Chemical Reaction Effects on Two Dimensional incompressible flow of a Viscous fluid over Moving vertical surface. *NeuroQuantology* , 63-74.
- [63] Ch. Achi Reddy, V. N. (2022). Magnetic Field And Chemical Reaction Effects on Unsteady Flow Past A Stimulate Isothermal Infinite Vertical Plate. *NeuroQuantology* , 20 (16), 5360- 5373.

- [64] Sowmya Jagadeesan, M. K. (2022). Implementation of an Internet of Things and Machine learning Based Smart Medicine Assistive System for Patients with Memory Impairment. *IJFANS International Journal of Food and Nutritional Sciences* , 1191-1202.
- [65] Venu, D. N. (2023). Design Analysis and Classification of Digital Transmission Based Composite Relay and Artificial Neural Network Approach. *IJFANS International Journal of Food and Nutritional Sciences* , 12 (1), 680-63.
- [66] Venu, D. N. (2023). Biomass Studies on Pyrolysis of Sugarcane Bagasse and Cashew Nut Shell for Liquid Fuels. *IJFANS International Journal of Food and Nutritional Sciences* , 11 (1), 695-706.
- [67] Venu, D. N. (2023). Synthesis and Study on Feasibility of Ethanol Production from Leachate of Pretreatment of Sugarcane Bagasse. *IJFANS International Journal of Food and Nutritional Sciences* , 12 (1), 707-715.
- [68] Venu, D. N. (2022). Design and Performance Analysis of Super Critical Fluid Extraction for SC-CO<sub>2</sub>. *IJFANS International Journal of Food and Nutritional Sciences* , 11 (12), 3854-3865.
- [69] Venu, D. N. (2022). Supercritical Fluid Evaluation and Extraction of Phenol from Sugarcane Bagasse Pyrolysis Oil. *IJFANS International Journal of Food and Nutritional Sciences* , 11 (12), 3866-3876.
- [70] Sandhya rani, D. V. (2022). IOT Based Smart Irrigation System Using Node MCU. *International Journal For Innovative Engineering and Management Research* , 11 (06), 100-106.
- [71] Dr.Nookala Venu, A. E. (2022). Low Power Area Efficient ALU with Low Power Full Adder. *International Journal For Innovative Engineering and Management Research* , 11 (06), 167-170.
- [72] Nookala Venu, B. (2015). Brain MRI Medical Image Segmentation Using Fuzzy Based Clustering Algorithms. *International Journal of Engineering Trends and Technology*, 22 (2), 83-88.