

**“EDTA And Tween 80 Enhanced Photogalvanic Effect Of Naphthol  
Blue Black Dye Sensitizer For Simultaneous Solar Energy  
Conversion And Storage”**

**Ravneet Maan**

**Research Scholar, Dept. of Chemistry, Faculty of Science, Tantiya University, Sri  
Ganganagar (Rajasthan)**

**Dr. Devender Singh**

**Research supervisor, Dept. of Chemistry, Faculty of Science, Tantiya University,  
Sri Ganganagar (Rajasthan)**

**Abstract :** A primary source of renewable energy is solar energy. This is the one of the most resourceful sources of energy for the future. The aim of this study is to harness and store solar energy through Naphthol blue black dye–EDTA–Tween 80 photogalvanic cells. The photogalvanic cells based on photo-sensitizer Naphthol blue black dye–Tween 80–reductant EDTA–NaOH alkaline medium has shown encouraging and very impressive improvement in solar energy conversion and storage. This combination of chemicals has shown harnessing of 108.11  $\mu\text{W}$  maximum powers with a storage capacity of 110 min as half change time from the 10.4  $\text{mWcm}^{-2}$  artificial and low illumination intensity. In this study, the observed optimum cell performance in terms of the maximum photopotential, maximum photocurrent, and short-circuit current is 844 mV, 768  $\mu\text{A}$ , and 730  $\mu\text{A}$ , respectively.

**Keywords:** Naphthol blue black, EDTA, Tween 80, maximum photocurrent, Photogalvanic effect (PGE), fill factor, power point, and conversion efficiency.

## 1. Introduction :

Today, global warming and the rapid decrease in energy resources caused by the large scale consumption of fossil fuels have become serious. Accordingly, renewable energy resources are attracting a great deal of attention, and solar energy is one of the most promising future energy resources [1]. Developed and developing countries of the world are focussing on environmental damage observed due to conventional energy powers. Renewable energy sources occur in nature which is regenerative or inexhaustible like solar energy, wind energy, hydropower, geothermal, biomass, tidal and wave energy. The photogalvanic (PG) cells are photo-electrochemical systems based on the "photogalvanic effect". The PG cell is a device producing energy through the photochemical processes occurring inside the electrolyte solution on light absorption within a highly absorbing electrolyte and which give rise to high energy products on excitation by a photon. These energy products loose photo-energy electrochemically to generation the electricity. These cells are quite different from the other solar cells. Different kinds of dyes as light absorbing materials, organic/inorganic chemicals as reductant, and anionic/cationic/neutral surfactants as micelles have been exploited for the solar energy conversion and storage through the PG cell technology. The Naphthol blue black dye has some characteristics which make it as a good photosensitizer for use in the solar energy harvesting through the PG cells. Conversion of solar energy into Electrical energy through photogalvanic cell is the most important and desirable route for obtaining electricity. Becquerel [2] was the first to observe the flow of current between the unsymmetrical illuminated metal electrodes in sunlight, and the

photogalvanics were first reported by Rideal and Williams [3], but it was systematically investigated by Rabinowitch [4-5]. Later on Kaneko and Yamada [6], Murthy et al. [7], Rohatgi Mukherjee et al. [8], Folcher and Paris [9], Alfredo et al. [10], Dube et al. [11], Bayer et al. [12], Matsumoto et al. [13] and Shiroishi et al. [14] have studied some interesting photogalvanic systems. Bisquert et al. [15] have reviewed the physical–chemical principles of dyesensitized solar cells, whereas Mayer [16] has presented the molecular approaches to solar energy conversion. The problems encountered in the development of photogalvanic cells have been discussed from time to time. Krasnoholovets et al. [17], Madhwani et al. [18], Gangotri and Bhimwal [19], Genwa and Chauhan [20], Genwa and Singh [21], Rathode et al. [22-23]. have recently developed some photogalvanic systems for solar energy conversion and storage. The scientific community has successfully converted solar energy in electrical energy up to desired extent through various processes but storage capacity of solar energy is still not up to the mark to use it as and when required. Many of them have used different photosensitizers, surfactants, reductants in photogalvanic cells, but no attention has been paid to the use of this system containing Naphthol blue black dye as energy material to enhance the electrical output and performance of the photogalvanic cell. Therefore, the present work was undertaken to achieve better performance and commercial viability of the photogalvanic cell.

## **2. Result and discussion :**

### **(a) Variation of potential and photocurrent with time :**

The photogalvanic cell was placed in dark till it attained a stable potential and then the platinum electrode was exposed to light. It was observed that potential

changes on illumination and it reached a constant value after a certain period. When the light source was removed, the direction of change in potential was reversed and a stable potential are again obtained after sometime. Figure 1 is a graphical representation of the variation of potential in the Naphthol Blue Black - EDTA - Tween 80 system with respect to time. It was observed that there was a rapid rise in photocurrent of Naphthol Blue Black - EDTA - Tween 80 system on illumination and it reaches a maximum value within few minutes. This value is denoted by  $i_{\max}$  (Maximum Photocurrent). Then the current was found to be decrease gradually with the period of illumination finally reaching a constant value at equilibrium. This value is represented as  $i_{\text{eq}}$  (Photocurrent at equilibrium). The variation of photocurrent in system with respect to time is represented in figure 2.

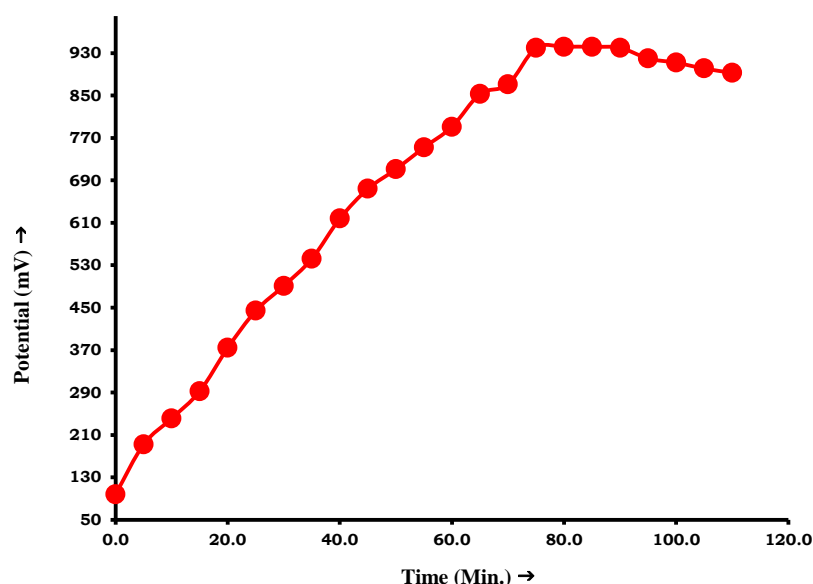


Fig.1 VARIATION OF POTENTIAL WITH TIME

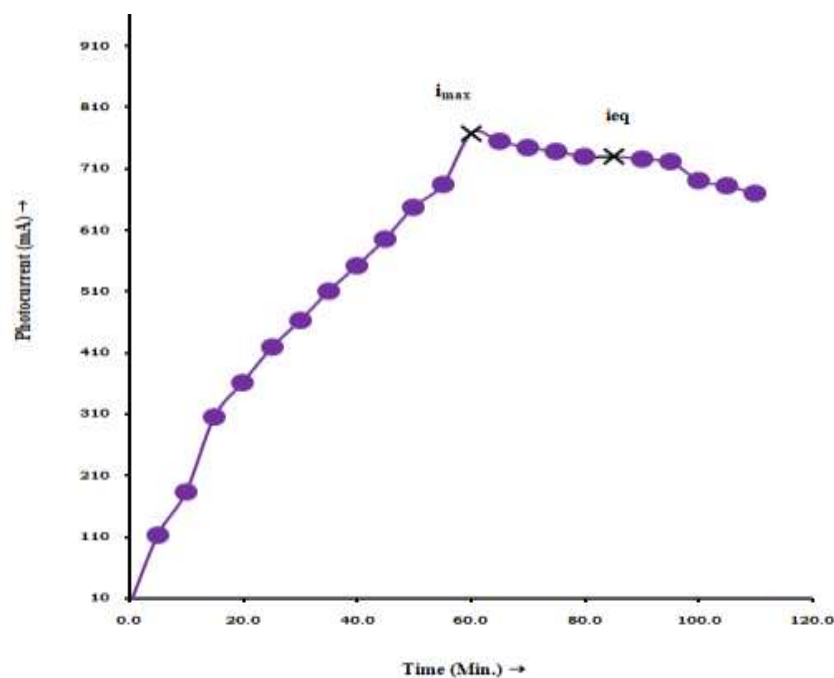


Fig. 2 VARIATION OF PHOTOCURRENT WITH TIME

**(b) Effect of variation of Bromocresol green, EDTA and Tween 80 concentration :**

The impact of variation of Naphthol blue black, EDTA and Tween 80 concentration are given in table 1. The changes in dye concentration were also studied by using solution of Naphthol blue black at different concentrations. It was observed that the photopotential, photocurrent and power increased with increasing in concentration of the Naphthol blue black. Maximum values of electrical output were obtained for a particular value of Naphthol blue black concentration ( $2.2 \times 10^{-5}$  M), above which a decrease in electrical output of the PG cell was observed. Low electrical output observed at the minimum concentration range of dye due to limited number of Naphthol blue black molecules to absorb the major part of the light in the path, while higher concentration of Naphthol blue black again resulted in a decrease

in electrical output because intensity of light reaching to those dye molecules which are near to the electrode decreases due to absorption of the major portion of the light by the Naphthol blue black molecules present in the path. Therefore corresponding fall in the electrical output. With increasing the concentration of the EDTA, photopotential, current and power were found to increase till it reaches a maximum value at  $1.4 \times 10^{-3}$  M. These values are 844.0 mV, 730.0  $\mu$ A and 616.12  $\mu$ W respectively. On further increase in concentration of EDTA, a decrease in the electrical output of the cell was observed. The fall in power output was also resulted with decrease in concentration of EDTA due to less number of molecules available for electron donation to the Naphthol blue black dye. On the other hand, the movement of dye molecules hindered by the higher concentration of the EDTA to reach the electrode in the desirable time limit and it will also result into a decrease in electrical output. The electrical output of the cell was increased on increasing the concentration of Tween 80. A maximum result was obtained at a certain value ( $1.2 \times 10^{-3}$  M) of concentration of Tween 80. On further increasing the surfactant concentration it react as a barrier and major portion of the surfactant photobleach the less number of dye molecules so that a down fall in electrical output was observed.

**Table -1.****Effect of variation of Naphthol blue black, EDTA and Tween 80 concentrations**Light Intensity =  $10.4 \text{ mW cm}^{-2}$ , Temperature = 303 K, pH = 11.65

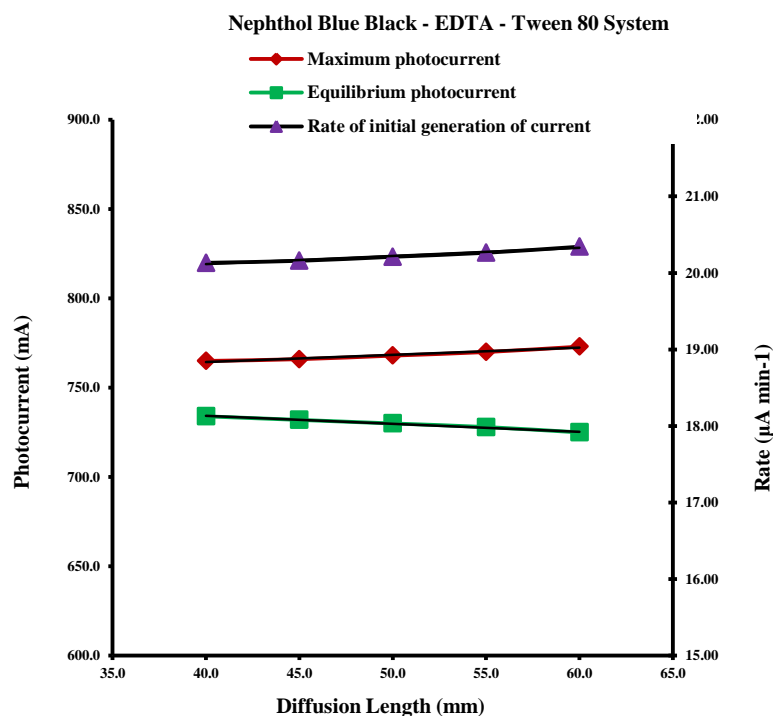
Concentrations	Photopotential(mV)	Photocurrent ( $\mu$ A)	Power ( $\mu$ W)
[Naphthol blue black] $\times 10^{-5}$ M			
2.0	663.0	648.0	429.62
2.1	761.0	698.0	531.17

2.2	844.0	730.0	616.12
2.3	752.0	700.0	526.40
2.4	654.0	637.0	416.59
<b>[EDTA] x 10<sup>-3</sup> M</b>			
1.2	671.0	621.0	416.69
1.3	774.0	710.0	549.54
1.4	844.0	730.0	616.12
1.5	781.0	698.0	545.14
1.6	674.0	609.0	410.47
<b>[Tween 80] x 10<sup>-3</sup> M</b>			
1.0	658.0	606.0	388.80
1.1	779.0	692.0	531.38
1.2	844.0	730.0	616.12
1.3	787.0	681.0	528.16
1.4	643.0	544.0	345.16

**(c) Effect of diffusion length :**

The impact of variation of diffusion length (it is distance between the two electrodes) on the current parameters of the cell ( $i_{\max}$ ,  $i_{\text{eq}}$  and initial rate of generation of photocurrent) was studied using H-shaped glass cells of different dimensions. It was observed that in the first few minutes of illuminations there is sharp increase in the photocurrent. As consequences, the maximum photocurrent ( $i_{\max}$ ) increase in diffusion length because path for photochemical reaction was increased, but this is not observed experimently whereas equilibrium photocurrent ( $i_{\text{eq}}$ ) decreased linearly. Therefore, it may be concluded that the main electroactive species are the leuco or

semi form of dye (photosensitizer) in the illuminated and dark chamber respectively. The ascorbic acid and its oxidation product act only as electron carriers in the path. The results are given in figure 3.



**Fig. 3 VARIATION OF CURRENT PARAMETERS WITH DIFFUSION LENGTH**

**(d) Effect of temperature :**

With an increase in the temperature, the photocurrent of the PG cell was found to increase with a corresponding rapid fall in potential. The effect of temperature on total possible power output in the Naphthol Blue Black - EDTA - Tween 80 system was also studied and it was observed that with the increase in temperature (temperature range under observation) the power output of the cell increase slowly irrespective of the rapid fall in photopotential. The results are reported in table 2.



Table- 2

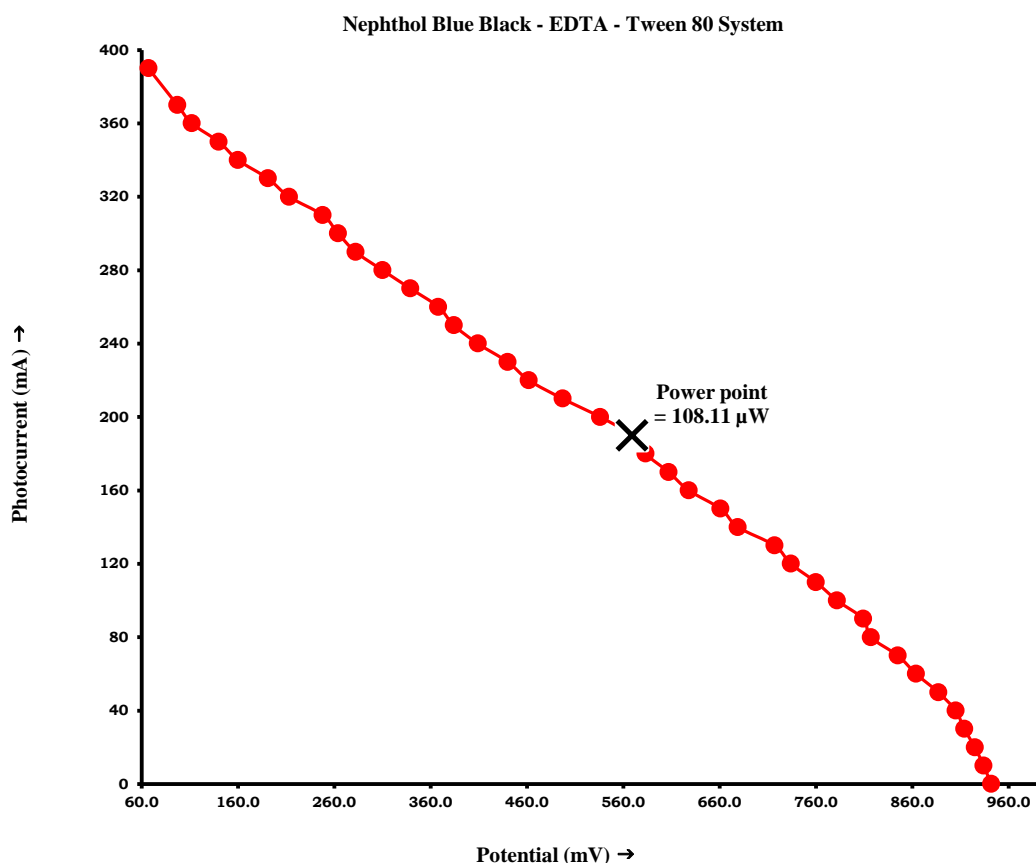
## Variation of photopotential and photocurrent with time

Nephthol Blue Black - EDTA-Tween80 System	Temperature (K)				
	298.0	300.0	303.0	310.0	315.0
Photopotential (mV)	858.0	854.0	844.0	828.0	815.0
Photocurrent ( $\mu$ A)	718.0	722.0	730.0	745.0	757.0

## (e) Current-Voltage (i-V) properties of the cell :

The short circuit current ( $i_{sc}$ ) 730  $\mu$ A and open circuit voltage ( $V_{oc}$ ) 942 mV of the PG cell were measured with the help of a microammeter (keeping the circuit closed) and with a digital pH meter (keeping the circuit open), respectively. The photo current and potential values in between these two extreme values were recorded with the help of a carbon pot (log 470 K) connected in the circuit of multimeter, through which an external load was applied. The i-V properties of the PG cell containing Naphthol Blue Black, EDTA and Tween 80 chemicals are graphically shown in figure 4. It was observed that i-V curve deviated from its regular rectangular shape. A point in the i-V curve, called power at point (pp), was determined where the product of photo current ( $i_{pp}$ ) 190  $\mu$ A and potential ( $v_{pp}$ ) 569 mV was maximum. With the help of i-V curve, the fill-factor was reported 0.1572 by using the formula:

$$\text{Fill factor } (\eta) = \frac{V_{pp} \times i_{pp}}{V_{oc} \times i_{sc}}$$



**Fig. 4 CURRENT VOLTAGE (i-V) CURVE OF THE CELL**

**(f) Cell performance and conversion efficiency :**

The performance of the PG cell was observed by applying an external load (necessary to have current at power point) after terminating the light source as soon as the potential reaches at a constant value. The performance was determined in terms of  $t_{1/2}$ , i.e., the time required in fall of the power output to its half at power point in dark. It was observed that the cell containing Naphthol Blue Black - EDTA - Tween 80 system can be used in dark for two hours. With the help of photo current and potential values at power point and the incident power of radiations, the conversion efficiency of the cell was determined as 1.03 % using the formula.

The results are graphically represented in time-power curve (figure 5).

$$\text{Conversion efficiency} = \frac{V_{pp} \times i_{pp}}{A \times 10.4 \text{mWcm}^{-2}} \times 100\%$$

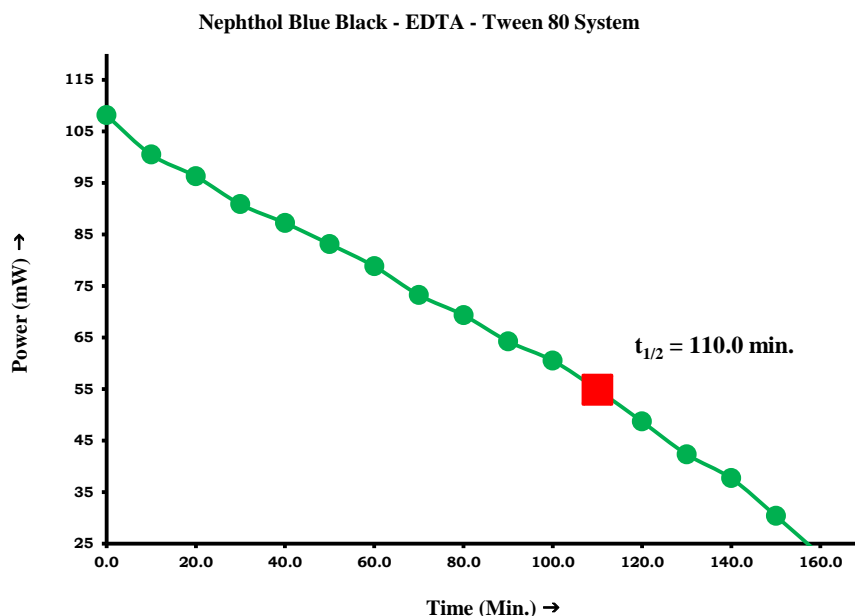


Fig. 5 TIME-POWER CURVE OF THE CELL

### 3. Mechanism :

When the dye molecule is excited by the light in the presence of electron donating substance (EDTA), the dye rapidly changed into colorless form. The dye now acts as a powerful reducing agent and can donate electron to other substance and reconverted to its oxidized state. On the basis of earlier studies a tentative mechanism in PG cell shown in figure 6.

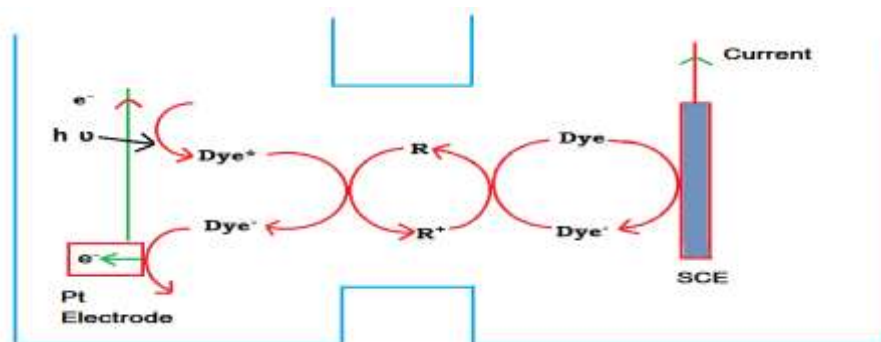


Fig. 6 Scheme of mechanism

SCE = Saturated calomel electrode

D = Dye (Photosensitizer)

R = Reductant

D = Semi &amp; Leuco form

#### 4. Materials and methods :

Naphthol Blue Black, EDTA, Tween 80 and NaOH of Loba Chemie were used in the present work. Solutions of EDTA, Naphthol Blue Black, Tween 80 and NaOH (1N) were prepared in double distilled water (conductivity  $3.5 \times 10^{-5} \text{ Sm}^{-1}$ ) and kept in amber coloured containers to protect them from sun light. A solution of Naphthol Blue Black, EDTA, Tween 80 and NaOH was taken in an H-type glass tube which was blackened by black carbon paper to protect from sun light. A shiny Pt foil electrode ( $1.0 \times 1.0 \text{ cm}^2$ ) was immersed in one limb of the H-tube and a saturated calomel electrode (SCE) was immersed in the other limb. Pt-electrode acts as a working electrode and SCE as a counter electrode. The whole system was first placed in the dark till a stable potential was attained, then the limb containing the Pt-electrode was exposed to a 200 W tungsten lamp (Philips). A water filter was used to cut off thermal radiation. A digital multimeter (HAOYUE DT830D Digital Multimeter) was used to measure the photo potential and current generated by the

system respectively. The i-V characteristics were studied by applying an external load with the help of Carbon pot (log 470 K) connected in the circuit the PG cell set-up is shown in figure 7.

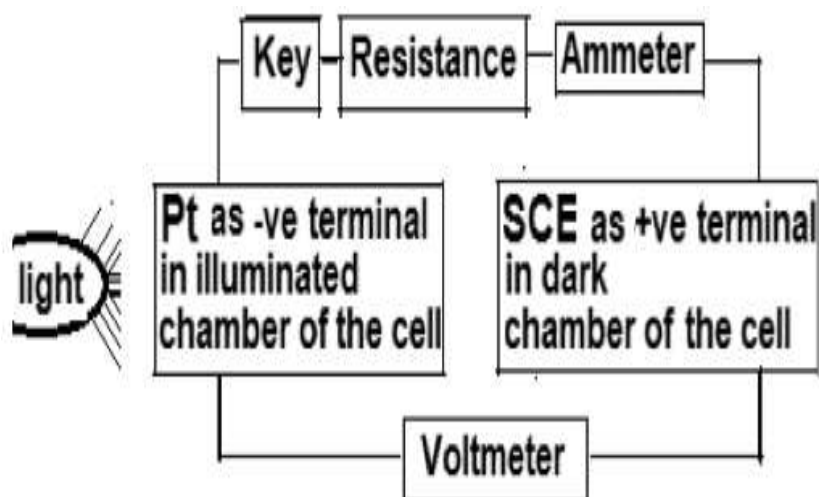
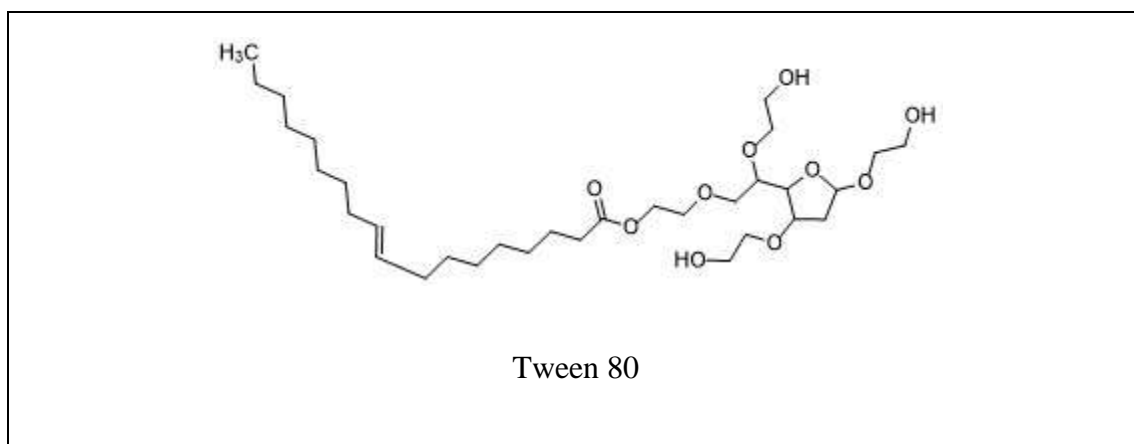
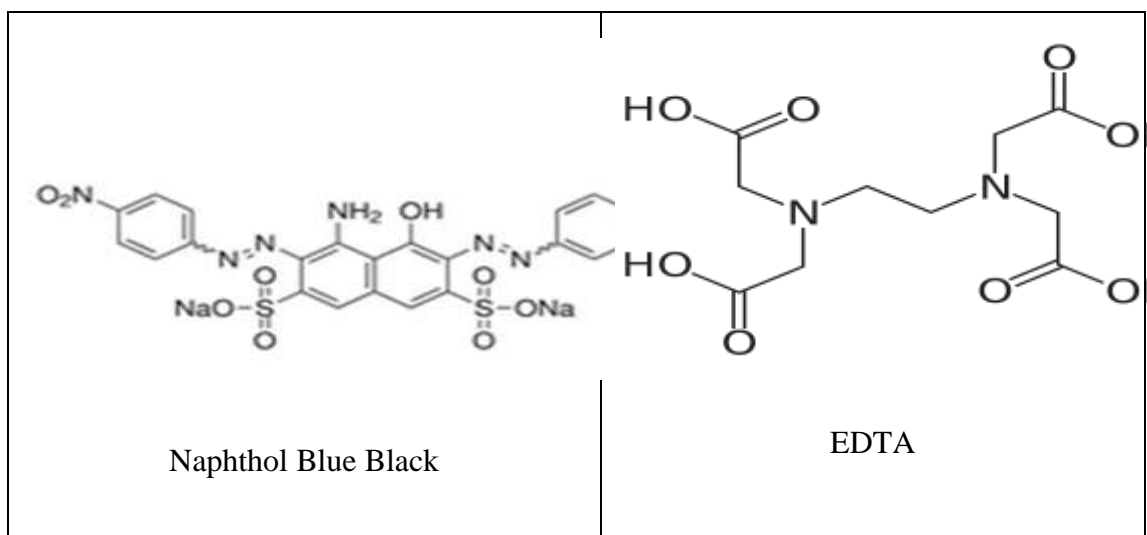


Fig.7 Photogalvanic Cell Set-up





Structures of chemicals

## 5. Conclusions :

The Naphthol Blue Black is a water soluble dye having good photo-sensitizer property. These characteristics of the dye make it a good light absorbing candidate for the use in dye sensitized PG cells. In present study, this dye has responded favourably to the use of good reductant EDTA in the presence of small Pt working electrode, combination electrode as counter electrode and Tween 80 as surfactant at very high pH to show abruptly enhanced photogalvanics (current 730  $\mu\text{A}$ , power 108.11  $\mu\text{W}$ ). This study revalidates efficacies of the small Pt working electrode, combination electrode, surfactant, and high pH for having the increased solar power generation and storage from any dye sensitizer through the PG cells. Therefore, the Naphthol Blue Black –EDTA–Tween 80 chemical combination with small Pt electrode will be an option for construction of highly efficient PG solar cells.

## Acknowledgement

The Authors are thankful to Head, Department of Chemistry for providing necessary facilities.

## References

1. H. Shiroishi, Y. Kaburagi, M. Seo, T. Hoshi, T. Nomura, S. Tokita and M. Kaneko. *J. Chem. Software*, 8, 47, 2002.
2. K. Becquerel. "On Electron Effects Under the Influence of Solar Radiation." *Comptes Rendus de l' Academie Sciences, Paris*. 9, 1839: 561.
3. E. K. Rideal and E.G. Williams. "The Action of Light on the Ferrous Iodine Iodide Equilibrium." *J. Chem. Soc. Trans.* 127. 1925: 258–269.
4. E. Rabinowitch. "The Photogalvanic Effect I: The Photochemical Properties of the Thionine-Iron System." *J. Chem. Phys.* 8, 1940: 551–559.
5. E. Rabinowitch. "The Photogalvanic Effect II: The Photogalvanic Properties of Thionine-Iron System." *J. Chem. Phys.* 8, 1940: 560–566.
6. M. Kaneko and A. Yamada. "Photopotential and Photocurrent Induced by Tolosafranine Ethylenediaminetetraacetic Acid System." *J. Physical Chem.* 81, 12, 1977: 1213–1215.
7. A.S.N. Murthy, A.C. Dak, and K.S. Reddy. "Photogalvanic Effect in Riboflavin Ethylenediaminetetraacetic Acid System." *Int. J. Energy Res.* 4, 4, 1980: 339–343.

8. K. K. Rohatgi-Mukherji, M. Roy, and B. B. Bhowmik. "Photovoltage Generation of the Phenosafranine Dye EDTA Sandwich Cell." *Solar Energy*. 31, 1983: 417–418.
9. G. Folcher, J. Paris, Paris J US Patent, 4391881, 1983.
10. O. Alfredo, P. Georgina, P.J. Sebasteian. *Solar Energy Materials & Solar Cells*, 59, 137, 1990.
11. S. Dube, S. L. Sharma and S. C. Ameta. "Photogalvanic Effect in Azur B - NTA System." *Energy Conversion and Management*. 38, 2, 1997: 101–106.
12. I. S. Bayer. I. Eroglu and L. Turker. "Photogalvanic Effect in Aqueous Methylene Blue – Nickel Mesh System: Conversion of Light into Electricity." *Int. J. Energy Res.* 25, 3, 2001: 207–222.
13. K. Matsumoto, S. Fujioka, Y. Mei, M. Wada and T. Erabi. "Construction of Photogalvanic Cell Using Photosynthetic Reaction Centre Complex and Cytochrome C2 from *Rhodospirillum Rubrum*." *Electrochemistry*. 69, 4,, 2001: 340.
14. H. Shiroishi, Y. Kaburagi, M. Seo, T. Hoshi, T. Nomura, S. Tokita and M. Kaneko. "Virtual Device Simulator of Bipolar Photogalvanic Cell." *J. Chem. Software*, 8, 47, 2002.
15. J. Bisquert, D. Cahen, G. Hodes, S. Riihle, A. Zaban. *J. Phy. Chem. B.*, 108, 2004: 8106.



16. G. J. Meyer. “Molecular Approaches to Solar Energy Conversion with Coordination Compounds Anchored to Semiconductor Surfaces.” *Inorganic Chemistry*. 44, 20, 2005: 6852–6864.
17. V. Krasnoholovets, N. Kukhtarev, T. Kukhtareva *Int. J. Modern Phys. B*. 20, 2006: 2323.
18. S. Madhwani, J. Vardia, P. B. Punjabi and V. K. Sharma. “Use of Fuschsin Basic: EDTA System in Photogalvanic Cell for Solar Energy Conversion.” *J. Power and Energy*. 221, 1, 2007: 33–39
19. K. M. Gangotri and M. K. Bhimwal. “Study on the performance of photogalvanic cells for solar energy conversion and storage: Brilliant cresyl blue-D-Xylose\_NaLS system.” *Int. J. Ambient Energy*. 31, 2, 2010: 71-80.
20. A. Chouhan and K. R. Genwa. “Study of Electrical Parameters and Energy Efficiency in Photogalvanic Cell Containing Erythrosine as a Photosensitizer in Benzethonium Chloride – EDTASystem.” *Energy Sci. Tech*. 2, 1, 2011: 18-24.
21. K. R. Genwa and K. Singh. “Optimum efficiency of Photogalvanic cell for solar energy conversion: Lissamine green B-ascorbic acid-NaLS System” *Smart Grid and Renewable Energ*. 4, 3, 2013: 306-311.
22. J. Rathore, R. K. Pareek and K. Singh. “Significance of Aniline blue in liquid phase dye sensitized Photo Galvanic cell for Solar power generation and Storage by using Ascorbic acid and Sodium Lauryl Sulphate chemicals” *Res. J. Chem. Environ*. 26, 3, 2022: 45-53.

23. J. Rathore, R. K. Pareek and K. Singh. “Natural dye Curcumin based Photogalvanic Solar Cell-Conversion and storage of solar energy into electrical energy for sustainable development” 9, 5, 2022: a 235-a247.

-----