

Indigenous Traditional Medicinal Knowledge of Local Folk lore People of at Ananthagiri hills, Vikarabad District, Telangana

¹Rapole Jyothirmai, ²Dr.Regula Sunitha

^{1,2}Assistant Professor of Botany, Government Degree College (W), Karimnagar

ABSTRACT

The life of the Folk lore is intimately connected with the plants in their day-to-day activities. They are dependant on the plants for their food, clothes, shelter, medicine, beverages, binding material, oils, resins, etc. The paper deals with the indigenous Traditional medicinal knowledge of local Folk lore people of medicinal plants used to cure various diseases and ailments available in Ananthagiri hills, situated in Vikarabad district Telangana state. A total of 250 plant species belonging to 80 families are documented. The ethnobotanical data obtained from local inhabitants revealed that 113 diseases find curative chemical constituents in 250 plant species.

Keywords: Ananthagiri hills, Ethnic Botany, Ethnobotany, Healthcare, Medicinal plants, Traditional knowledge, Vikarabad district, Telangana state,

INTRODUCTION

The word 'ethno' means a group of people sharing common origin, culture, language, customs, beliefs, traditions, etc., and 'botany' is the study of plants.² Thus, Ethnobotany is a hybrid term, with anthropological approach to plant science. For Ethnobotanical study, there should be close working relationship between botanists, ecologists, anthropologists, chemists, soil scientists, pharmacologists. While botanists are required to identify the plants, the others are required for ecology and environment, for gathering the data of the plants used by the ethnic groups, for phytochemical analysis, for noting down the details of soil and for testing the efficacy of native dugs. Since the past the people had tried to gain knowledge about the plants their uses. Plants have basic necessity to full fill their basic requirements like food, shelter etc. the modern medicines used now have their origin from the traditional medicinal knowledge. Many drugs are originated from the knowledge about the plants in traditional and folk medicine.⁵ World wide 80% of the population in developing countries still depends on traditional medicine for their primary health care as per world health organisation.³ The traditional medicinal plants depict the socio-culture, spiritual and medicinal area of rural tribal families. The very name Ethnobotany indicates that it is an interdisciplinary science¹. The life of the tribals is intimately connected with the plants in their day-to-day activities. They are dependant on the plants for their food, clothes, shelter, medicine, beverages, binding material, oils, resins, etc. The tribals have small families. They employ some plants for contraception.⁷ A further enquiry, in this line, may bring the population in general, under control. In India, plants have been used in traditional medicine for several thousand years. 2500 plant species used by traditional healers, 100 species of plants serve as regular sources of medicine. The tribals use curare botanically known as

Chondrodendrontomentosumas hunting poison.⁶ Later on it has been found by the scientific community that it contains tubocurarine, which is now being used as a painkiller and muscle relaxant². A further investigation, on other plants, may lead to the discovery of new sources in this direction. The tribals use some plants as narcotics and hallucinogens. A further enquiry may lead to the discovery of new drugs for anesthesia. There are many remedies among the various traditional systems for cure, for a number of ailments.⁸ Even now, due to poor condition of modern healthcare facilities, poverty, in-accessability to modern treatments, people of tribal and rural areas depend on medicinal plants to cure various diseases.³ There is an intimate relationship between plants and human beings. There are several references of use of plants by man in the Indian epics. Plants were used by our ancestors, folklore and tribal societies. Many of the rituals are plant-based⁴. So, the present study is aimed at documentation of ethnomedical uses of flora of the Ananthagiri hills.^{7&9}

MATERIALS AND METHODS

The work was undertaken for about a period two years starting from June' 2017 to the end of June' 2019. The work is mainly confined to Ananthagiri Hills and its environs covering about a radius of 78 kms, which comes under Vikarabad reserved forest and along with ethnic information. In the present study the non-tribals like forest officials, teachers, registered medical practitioners, local herbal healers, shepherds and farmers who had traditional knowledge about medicinal plants were consulted and further authentication of information and future reference, voucher specimens were collected. The main aim of the survey is to prepare ready checklist of medicinal plants present at and around Ananthagiri hills used by local herbalists and village folklore to cure various human ailments. The areas covered are Ananthagiri hills particularly at Ananthapadmanabha temple and its surroundings, followed by villages of Ananthagiripalle, Godhumaguda, Kerelli, Dharur, Durgamchervu, Nagasanipalle Tanda, Mohammadpalle, Velichala, Mothukupalle, (Reserved forest), Narsimhuni gutta, Gattukesaram, Kondapur and Ramaiahguda. The data presented here is collected by frequent field visits by the author to these areas once in two months for about a period of two years. The information's on medicinal properties of plants is gathered from various sources such as consulting the local village heads, elderly people, Vaidyas, and other herbal practitioners. Help from Forest department personnel including DFO-Vikarabad and his associates were taken during the survey.

ENUMERATION TABLE NO.1

In the enumeration table No.1, the family and taxons are arranged alphabetically. Ethno botanical uses of some medicinal plant parts used by tribes for some disease

Sl. No.	Botanical Name	Family	Vernacular Name	Part	Aliment
1.	<i>Abrus precatorius L.</i>	Fabaceae	Gurivinda	Leaves,	Earache Cough cold Skin diseases

2.	<i>Abutilon indicum</i> G.Don.	Malvaceae	Adavibenda	Leaves	Urinary problems
3.	<i>Acacia nilotica (L)</i> <i>Delile sub-sp indica</i> (Benth) Brenan.	Fabaceae	Nalla tumma	Leaves	Wounds Asthma Cough Dental problems. Cough Dysentery piles.
4.	<i>Acacia leucophloea</i> Willd.	Fabaceae	Tellatumma		Ulcer boils. Bronchitis Rheumatic Fever arthritis Diabetes.
5.	<i>Acalypha indica L.</i>	Euphorbiaceae	Muripinda	Whole plant	Eczema, skin problems Wounds
6.	<i>Acalypha alnifolia</i> Klen ex Willd.	Euphorbiaceae	Mirapakuppinta	Leaves	worms.
7.	<i>Acalypha paniculata</i> Miq.	Euphorbiaceae	Adavikuppinta	Whole plant	Eczema Skin diseases Scabies Urinary Problems worm infestations
8.	<i>Acanthospermum hispidum</i> DC.	Asteraceae	Sannapalleru	Whole plant	Skin diseases and in scorpion sting
9.	<i>Achyranthes aspera L.</i>	Amaranthaceae	Uttareni	Whole plant	Leucorrhoea Diarrhoea Jaundice Tooth pain Asthma
10.	<i>Actinopteris dichotoma</i> (Sw.) Link.	Actinopteri- daceae	Pittakaalu	Whole plant	Dandruff Hair tonic Antifertility Antipyretic.
11.	<i>Adiantum incisum</i> Forsk.	Adiantaceae	Mayurasikha	Whole plant	Skin diseases.
12.	<i>Aervalanata (L.) Juss.</i>	Amaranthaceae	Konda pindi	Whole plant	Kidney stone Diabetes, boils cardiac diseases
13.	<i>Aerva javanica</i> (Burm.f.) Juss ex Schult.	Amaranthaceae	Peddapindikura	Whole plant	Kidney stone problems.

14.	<i>Aganosma cymosa</i> G.Don.	Apocynaceae	Maalatilata	Root	Snakebite. Diarrhoea
15.	<i>Agave americana</i> L.	Amaryllidaceae	Kittanara	Leaves,	Other uses
16.	<i>Ageratum conyzoides</i> L.	Asteraceae	Vaasavi	Whole plant	Wound healing Gastro intestinal disorders.
17.	<i>Aglaia roxburghiana</i> Sensu.Bedd.	Meliaceae	Yerraadugu	Leaves	Antidote Diabetes. Leprosy Throat Pain
18.	<i>Albizia amara</i> (Roxb.) Boiv.	Fabaceae	Konda sigara	Leaves	Dandruff Skin diseases Gonorrhoea Piles.
19.	<i>Albizia lebeck</i> (L.) Willd.	Fabaceae	Dirisena	Leaves	Antidote. Piles Diarrhoea
20.	<i>Allophyluscobbe</i> (L.) Raeusch	Sapindaceae	Chinna Kunkudu saali	Root	Diarrhoea.
21.	<i>Aloe vera</i> (L) Burma.f.	Liliaceae	Chinnakalabanda	Leave	Sexually Diseases
22.	<i>Alternanthera</i> <i>pungens</i> Kunth.	Amaranthaceae	Mulla ponaganti	Leaves	Diabetes Gonorrhoea.
23.	<i>Amaranthus blitum</i> L.	Amaranthaceae	Totakura	Leaves	Urinary Problem kidney stones.
24.	<i>Amaranthus spinosus</i> L.	Amaranthaceae	Mulla Totakura	Leaves	Anaemia., Enhance lactation.
25.	<i>Andrographis</i> <i>paniculata</i> (Burm.f) Wall ex. Nees.	Acanthaceae	Nelavemu	Whole plant	Malaria.skin diseases feverAntidote.
26.	<i>Anisomelesmalabarica</i> (L).R.Br.	Lamiaceae	Maga bira	Leaves	Rheumatic pains
27.	<i>Anisomeles indica</i> (L.) Kuntz.	Lamiaceae	Chinnaranabheri	Whole plant	Urination problem . Fever
28.	<i>Annona reticulata</i> L.	Annonaceae	Ramaaphalamu	Leaves Stem bark	DiarrhoeaDysentery
29.	<i>Annona squamosa</i> L.	Annonaceae	Seetha phalamu	Unripe Fruit, Leaves	DiarrhoeaDysentery Destroy lice insects
30.	<i>Anodendronpaniculatu</i>	Apocynaceae	Atukuduteega	Root	Antifertility

	<i>m DC.</i>				dysentery.
31.	<i>Argemone mexicana (Willd) L.</i>	papaveraceae	Yerrickusuma	Yellow latex	Skin diseases Fever
32.	<i>Argyrea nervosa (Burm.f) Bojer.</i>	Convolvulaceae	Chandrapaala	Roots	Wound healing Aphrodisiac
33.	<i>Aristida setacea Retz.</i>	Poaceae	Cheepuru gaddi	stem	Other uses
34.	<i>Aristolochiabracteolata Retz.</i>	Aristolochaceae	Gadidagadapa	Leaves	Dandruff Snakebite Scabies Eczema.
35.	<i>Aristolochia indica L.</i>	Aristolochaceae	Eswari	Leaves	Snakebite.
36.	<i>Artabotrys odoratissimus R.Br.</i>	Annonaceae	Teegasampenga	Leaves	
37.	<i>Asparagus racemosus Willd.</i>	Asparagaceae	Pilli gaddalu	Root	Fertility in women.
38.	<i>Asystasia gangetica (L.) T.And.</i>	Acanthaceae	Paadabeera	Whole plant	Joint pains.
39.	<i>Azadirachta indica A.Juss. W&A.</i>	Meliaceae	Vepachettu	Leaves	Chickenpox Smallpox Malaria.
40.	<i>Bambusa tulda Roxb.</i>	Poaceae	Mulluveduru	stem	Other uses
41.	<i>Basella rubra L.</i>	Basellaceae	Yerrabatsalaku	Leaves	Leucoderma, Indigestion Kidney Stone Problems Gonorrhoea.
42.	<i>Bauhinia tomentosa L.</i>	Fabaceae	Kaanchinichettu	Young buds	Dysentery Cough Leucorrhoea.
43.	<i>Benkaramalabarica (Lam) Tirven.</i>	Rubiaceae	Pedda manga	Fruit	Abdominal pain Throat Infections.
44.	<i>Boerhaaviadiffusa L.</i>	Nyctaginaceae	Atikamaamidi	Whole plant	Jaundice Arthritis Diabetes.
45.	<i>Boerhaavia erecta L.</i>	Nyctaginaceae	Tella Atika maamidi	Whole plant	Jaundice Anaemia Urinary problem
46.	<i>Borassus flabellifer L.</i>	Arecaceae	Tati chettu	Leaves	Skin problems
47.	<i>Brassica juncea Hook & Thoms.</i>	Brassicaceae	Aavaalu	Seed	Snakebite Skin allergies, Boils. Skin diseases.
48.	<i>Bridelia retusa Spreng.</i>	Phyllanthaceae	Koramaddi	Root	Hepatoprotective.

49.	<i>Bryophyllumpinnatum</i> (Lam).Oken.	Crassulaceae	Ranapala	Leaves	Wounds Scabies Urinary bladder disorders.
50.	<i>Buchananialanzan</i> Spreng.	Anacardiaceae	Saarapappu	Leaves	LeucorrhoeaMenorr hoea. Diarrhoea.
51.	<i>Caesalpinia</i> <i>pulcherrima</i> (L.)Swartz.	Fabaceae	Pyditangedu	Stem bark	Abortifacient. Purgative
52.	<i>Caesalpinia sappan</i> L.	Fabaceae	Gacha	Stem bark	Other uses
53.	<i>Calotropis</i> <i>gigantea</i> (L.) Dryand.	Apocynaceae	TellaJilledu	Root	Skin diseases, arthritis Bites. wound healing
54.	<i>Cansjera rheedii</i> J.Gmelin.	Opiliaceae	Mallimadugutee ga	Leaves	poisonous bites.Leaves in Diabetes.
55.	<i>Canthiumdicocum</i>	Rubiaceae	Nalla balusu	Stem bark	Diarrhoea Fever.
56.	<i>Capparis</i> <i>oblongifolia</i> Forsk.	Capparaceae	Meruputeega	Root	Aphrodisiac Diabetic.
57.	<i>Carallumaadscendens</i> var <i>attenuata</i> (Wight) Gravely and Mayur	Apocynaceae	Kundetikommul u	Stem	Stomachic Indigestion
58.	<i>Cardiospermum</i> <i>macrocarpum</i> Kunth.	Sapindaceae	Peddabudda	Whole plant	Rheumatic Pains.
59.	<i>Carica papaya</i> L.	Caricaceae	Boppayi	Fruit	Digestive Problem anthelminthic Emmenagogue Galactagouge constipation.
60.	<i>Cascabala thevetia</i> (L.) Lipp.	Apocynaceae	Pacha ganneru	Root	Paste in boils. Cancer. .
61.	<i>Cassia absus</i> L.	Fabaceae	Chanupaala vittulu	Leaves	Cough BoneFracture
62.	<i>Cassia fistula</i> L.	Fabaceae	Kola ponna	Root	Jaundice.
63.	<i>Cassytha filiformis</i> L.	Lauraceae	Paachiteega	Whole plant	LeucodermaCough, Cold Skin diseases.
64.	<i>Catheranthes roseus</i> (L.) G.Don.	Apocynaceae	Billaganneru	Root	Cancer Diabetes Blood pressure

					Menorrhagia Cardio tonic Stomach disorders
65.	<i>Catunaregum spinosa</i> (Thunb.) Tirven.	Rubiaceae	Chinna manga	Root bark	Dandruff. Dysentery Diarrhoea Rrheumatic pains.
66.	<i>Centella asiatica</i> L.	Apiaceae	Sarswattiaaku	Leaves	Memory booster.
67.	<i>Ceropegia juncea</i> Roxb.	Apocynaceae	Manchimidana	Tuber	Dysentery Diarrhoea Urinary bladder Aphrodisiac Teeth problem.
68.	<i>Chloris barbata</i> Sw.	Poaceae	Jada kuchula gaddi	stem	Other uses
69.	<i>Chloroxylon swietenia</i> DC.	Rutaceae	Billu	Leaves	Wounds Rheumatism
70.	<i>Cipadessa buccifera</i> Miq.	Meliaceae	Pottivepa	Leaves	Antidote and antidibetic. wound healing
71.	<i>Cissus quadrangularis</i> L.	Vitaceae	Nalleru	Whole plant	Paste in bone fracture.
72.	<i>Citrullus colocynthis</i> (L.) Scharder.	Cucurbitaceae	Yerripucha	Root	Pains. Purgative
73.	<i>Citrus medica</i> L. var. <i>medica</i>	Rutaceae	Maadipalamu	Fruit	Giddiness Indigestion Gastric vomiting
74.	<i>Cleome gynandra</i> L.	Cleomaceae	Vaaminta	Leaves	Ear and tooth problem Anthelmentic
75.	<i>Coccinia indica</i> W&A.	Cucurbitaceae	Dondakaaya	Whole plant	Diabetes Skin diseases
76.	<i>Cocculus hirsutus</i> (L.) Diels.	Menispermaceae	Sibbiteega	Leaves	Leucorrhoea
77.	<i>Commelinabenghalensis</i> L.	Commelinaceae	Venna veduru	Whole plant	Wounds Boils, burns Scabies
78.	<i>Commiphora caudata</i> (W&A) Engl.	Burseraceae	Konda regu	Root	Aphrodisiac antidiabetic. Rheumatic pains.
79.	<i>Cordia oblique</i> Willd.	Boraginaceae	Bankairiki	Fruit	Bronchial disorders.
80.	<i>Crossandra undulataefoli</i>	Acanthaceae	Kanakambaramu	Leaves	Cough and cold

	<i>aSalisb.</i>				
81.	<i>Crotalaria calycina</i> Schr.	Fabaceae	Bikkinatharudugida		Other uses
82.	<i>Crotalaria verrucosa</i> L.	Fabaceae	Glligicha	Whole plant	Leucorrhoea Swelling, Scabies Lleprosy
83.	<i>Cucurbita maxima</i> L.	Cucurbitaceae	Gummadikaaya	Leaves	Asthma.
84.	<i>Curculigoorchoides</i> Gaertn.	Hypoxidaceae	Nelatadigaddalu	Whole plant	Leucorrhoea Impotency
85.	<i>Cyanotis tuberosa</i> (Roxb).Schult.	Commelinaceae	Yemmagaddalu	Root	Febrifuge
86.	<i>Cynodon dactylon</i> Pers.	Poaceae	Garika gaddi	Whole plant	Scorpion sting.
87.	<i>Cyperus rotundus</i> Linn.	Cyperaceae	Tunga mushti	Root	Leucorrhoea
88.	<i>Dactyloctenium aegyptium</i> (L.) Willd.	Poaceae	Nelaraagi	stem	Other uses
89.	<i>Daemia extensa</i> (Jacq.)R.Br.	Apocynaceae	Dustaputeega	Whole plant	Asthma Diarrhoea.Jaundice Eye Problem Labour Pain
90.	<i>Dalbergia lanceolaria</i> L.f	Fabaceae	Yerrapachari	Whole plant	Arthritis. Dyspepsia.
91.	<i>Dalbergia sissoo</i> DC	Fabaceae	Sissoo	Whole plant	Rheumatoid Arthritis. Sexual impotency Dyspepsia, Dysurea ulcers.
92.	<i>Delonix regia</i> Raf.	Fabaceae	YerraSunkesula	Leaves	Inflammation arthritis.
93.	<i>Delonix elata</i> (L.) Gamble	Fabaceae	Tellasunkesula	Leaves	Glandular swellings
94.	<i>Dendrophthoe facata</i> (L.f) Ettingsh.	Loranthaceae	Badanika	Whole plant	In urinary calculi, wounds, asthma, Skin allergies.
95.	<i>Desmodium gangeticum</i> (L) DC	Fabaceae	Ubbuchettu	Whole plant	Epilepsy. Cough,Diarrhoea Fever Piles
96.	<i>Desmodium triflorum</i>	Fabaceae	Muntamandu	Leaves	Diarrhoea Dysentery

	(L) DC.				
97.	<i>Dichrostachys cinerea</i> W&A.	Fabaceae	Veluturuchettu	Root	Rheumatism, urinary problem Renal troubles. Leucorrhoea.
98.	<i>Diclipterapaniculata</i> (Forssk.)I.Darbysh.	Acanthaceae	Sannapulla	Root	Skin diseases Fever Indigestion Wound healing.
99.	<i>Digera arvensis</i> Forsk.	Amaranthaceae	Chenchala koora	Leaves	Constipation wounds, boils Digestive disorders
100	<i>Digitariasanguinalis</i> (L.) Scop.	Poaceae	Vutla gaddi	stem	Other uses
101	<i>Dioscorea oppositifolia</i> L.	Dioscoraceae	Yellagadda	Leaves	General health
102	<i>Dioscorea pentaphylla</i> L.	Dioscoraceae	Yesurugaddalu	Tubers	Urinary calculi
103	<i>Diospyros</i> <i>chloroxylon</i> Roxb.	Ebenaceae	Ulinda	Fruit	Digestive Problem.
104	<i>Dodonaea viscosa</i> (L.) Jacq.	Sapindaceae	Bandedu	Leaves	Wound healing. Muscle swelling Epilepsy Bone fracture.
105	<i>Dolichondrone</i> <i>arcuata</i> (Wight) C.B.Clarke.	Acanthaceae	Neeruddi	Stem bark	LeucorrhoeaMenorr hoea.
106	<i>Dolichos falcatus</i> Klein.	Fabaceae	Adavi Pillipesara		Other uses
107	<i>Dregea volubilis</i> (L.f) Benth ex Hook.f	Apocynaceae	Tummuduteega	Leaves	Rheumatic pains. Cold Snakebites. Bone fractures.
108	<i>Drimia indica</i> (Roxb.) Jessop.	Liliaceae	Adaviyerragadda	Bulb	Skin diseases
109	<i>Drypetes sepiaria</i> (W&A). Pax and Hoffm.	Putranjivaceae	Maachibeera	Fruit	Digestive Disorders
110	<i>Eclipta prostrata</i> (L.) L.	Asteraceae	Guntagalagara	Whole plant	Skin diseases Jaundice
111	<i>Ehretia microphylla</i> Lamk.	Boraginaceae	Chinna tamalapaku	Leaves	Skin diseases, cough, stomach

					Disorders.
112	<i>Eleusine indica</i> (L).Gaertn.	Poaceae	Thipparaagi	Stem	Other uses
113	<i>Elytraria acaulis</i> (L.f) Lindau.	Acanthaceae	Yedduadugu	Leaves	Wound healing.
114	<i>Emilia sonchifolia</i> (L)DC.	Asteraceae	Kundetiaaku	Whole plant	Diarrhoea Night blindness
115	<i>Enicostemmaaxillare</i> (Lam) Raynal	Gentianaceae	Nelagolimidi	Tender shoot	Menorrhoea Leucorrhoea.
116	<i>Eragrostis tenella</i> (L).Beauv.	Poaceae	Chinnagarika gaddi	Stem	Other uses
117	<i>Eucalyptus teriticornis</i> Smith.	Myrtaceae	Neelagiritylamu	Leaves	Cough and fever. Rheumaticpains.
118	<i>Euphorbia antiquorum</i> L.	Euphorbiaceae	Bommajemudu	Whole plant	Skin Diseases Leucorrhoea. Arthritis. Leprosy Toothache. Cancer.
119	<i>Euphorbia hirta</i> L.	Euphorbiaceae	Pacha bottu	Whole plant	Urinary Disorders Leucorrhoea Asthma Cough Liver Disorders.
120	<i>Euphorbia thymifolia</i> L.	Euphorbiaceae	Yerrausirika	Whole plant	Urinarydisorders Leucorrhoea Asthma, Cough Liverdisorders.
121	<i>Evolvulusalsinoides</i> L.	Convolvulaceae	Vishnukaanta	Whole plant	Hairtonic.
122	<i>Ficus arnottiana</i> Miq.	Moraceae	Konda raavi	Stem bark	Cleanse teeth.
123	<i>Ficus benghalensis</i> L.	Moraceae	Marri chettu	Latex	Rheumatism Tooth ache Piles. Leucorrhoea Dysentery
124	<i>Ficus glomerata</i> Roxb.	Moraceae	Atti	Stem bark	Toothache. Diabetes sexual debility
125	<i>Ficus hispida</i> L.	Moraceae	Bommidi	Stem bark	Leucorrhoea Diabetes.

					Sexual impotency.
126	<i>Ficus mollis</i> Vahl.	Moraceae	Noogujuvvi	Leaves	Diabetes Jaundice.
127	<i>Ficus religiosa</i> L.	Moraceae	Raagi	Stem bark	Skin diseases aphrodisiac.
128	<i>Fluggea leucopyrus</i> Willd.	Euphorbiaceae	Tellapurugudu	Leaves	Leucorrhoea
129	<i>Gardenia gummifera</i> L.f.	Rubiaceae	Manchibikki	Gum	Gastrointestinal disorders Fever.
130	<i>Getonia floribunda</i> Lamk.	Combretaceae	AdaviJaama	Leaves	Ulcers Antidote. Jaundice.
131	<i>Gevotiarottelriformis</i> Griff.	Euphorbiaceae	Tellapoliki	Stem bark	Leucorrhoea. Skindiseases.
132	<i>Glinuscerviana</i> (L.) Ser.	Molluginaceae	Verrichatraku	Whole plant	Stomach pain Fever
133	<i>Glinus nudicaulis</i> Lam.	Molluginaceae	Parpadagam	Whole plant	Whooping cough and boils
134	<i>Glinusoppositifolia</i> (L). DC.	Molluginaceae	Santraasi	Whole plant	Ulcer,swellings stomach disorders and skin diseases. Other uses
135	<i>Gloriosa superba</i> L.	Liliaceae	Adavinaabhi	Root	Chicken- pox
136	<i>Glycosmis mauritiana</i> (Lam) Tanaka.	Rutaceae	Gungi	Leaves	Skin diseases.
137	<i>Gmelina asiatica</i> L.	Verbenaceae	Chinnagummadi	stem	Stomach pain.
138	<i>Gmelina arborea</i> Roxb.	Verbenacea	Pedda gummudu e	Leaves	Cough. Diabetes and leucorrhoea.
139	<i>Gymnema sylvestre</i> (Retz) R.Br.ex.Schult.	Apocynaceae	Podapatri	Leaves	Diabetes HypoglycemicObesi ty High Cholesterol Anaemia Digestion Scorpion Sting Rat Bite Fruits In AnthelminticBronch

					itis Cardiac Disorders.
140	<i>Gyrocarpus americanus</i> Jacq.	Hernadiaceae	Tellapoliki	Stem bark	Cancer. Other uses
141	<i>Hardwickia binata</i> Roxb.	Fabaceae	Yepi	Wood powder	Gonorrhoea.
142	<i>Hedyotis herbacea</i> L.	Rubiaceae	Chiru veru	Whole plant	Asthma Fever and Dysentery.
143	<i>Hedyotis umbellata</i> (L.) Wall.	Rubiaceae	Nelachemma	Root	Asthma.
144	<i>Heliotropium indicum</i> L.	Boraginaceae	Naagadanti	Whole plant	wound healing, skin Problems Scorpion sting.
145	<i>Hemidesmus indicus</i> (L.) Schult.	Apocynaceae	Sugandhapala	Root	Cardiotonic Refrigerant Wound Healing Urinary Diseases Skin Diseases, Jaundice Diabetes.
146	<i>Hemionitis arifolia</i> (Burm.f) Moore.	Hemionitidaceae	Ramabhanam	Whole plant	Knee pain. Diabetic Burns Antifertility
147	<i>Hibiscushirsutus</i> (Lam) Sweet.	Malvaceae	Nelabenda	Leaves	Chest pain
148	<i>Hugoniamystax</i> L.	Linaceae	Kaakibeera	Root	Antidote
149	<i>Hybanthus enneaspermus</i> (L.) F.V.Muell.	Violaceae	Ratnapushpa	Whole plant	Aphrodisiac
150	<i>Ichnocarpus frutescens</i> (L.) R.Br.	Apocynaceae	Nalla teega	Whole plant	Cancer Diabetes Skin Diseases .Diabetes, Dyspepsia Bladder Stones.
151	<i>Indigofera linnaei</i> Ali.	Fabaceae	YerraPalleru	Whole plant	Leucorrhoea Fever Epilepsy
152	<i>Indigofera tinctoria</i> L.	Fabaceae	Konda neeli	Leave	Increase Lactation .Mothers Burns Piles

					JAundice Leucorrhoea Anaemia Aarthritis
153	<i>Indigofera linifolia</i> Retz .	Fabaceae	Yerrapalleru	Whole plant	Wound healing tuberculosis Obesity kidney stone. Seed antidote.
154	<i>Ixora pavetta</i> Andrews.	Rubiaceae	Korivichettu	Flowers	Whooping cough
155	<i>Jasminum rigidum</i> Zenk.	Oleaceae	Peddamalla	Flower	Cough.
156	<i>Jasminum sambac</i> Ait.	Oleaceae	Virajaaji	Flower	Skin diseases.
157	<i>Jatropha curcas</i> L.	Euphorbiaceae	Adavi-amudamu	Latex	Cracks on lips Burns Wounds Toothache
158	<i>Jatropha gossypifolia</i> L.	Euphorbiaceae	Yerra aamudamu	Leaves	Heal Wounds Cuts.
159	<i>Kedrostis rostrata</i> (Rottl.) Cong.	Cucurbitaceae	Kunkumadonda	Root	Asthma Piles. Antidote Anthelmintic.
160	<i>Lantana camara</i> L.	Verbenaceae	Puli kampa	Leaves	Ringworm Infestations.
161	<i>Lawsonia inermis</i> L.	Lythraceae	Gorintaaku	Leaves	Skin Diseases Burns.
162	<i>Leonotis nepetaefolia</i> (L)R.Br.	Lamiaceae	Yerratummi	Whole plant	Rheumatic pains Wounds.
163	<i>Leucas aspera</i> (Willd).Link.	Lamiaceae	Tummipoo	Leaves	Cough Cold Fever Head ache Scorpion Sting Fever Stomach Pain Indigestion.
164	<i>Limonia alata</i> (W&A)Swungle.	Rutaceae	Munugudu	Leaves	Diabetes. Rheumatic pains.

165	<i>Lygodium flexuosum</i> (L.) Sw.	Lygodiaceae	Adavishatavari	Leaves	Rheumatic pain wound healing
166	<i>Magifera indica</i> L.	Anacardiaceae	Maamidi	Leaves	Diarrhea Dysentery. Rheumatism. Diabetes.
167	<i>Martynia annua</i> L.	Martyniaceae	Telukondikaaya	Fruit	Scorpion sting
168	<i>Mimosa pudica</i> L.	Fabaceae	Attipatti	Whole plant	Aantidote. Skin Diseases.
169	<i>Mimosa rubicaulis</i> Lam.	Fabaceae	Uddrakampa	Root	Wounds Snakebite Urinary Disorders
170	<i>Mimosopselengi</i> L.	Sapotaceae	Pogada	Whole plant	Dental Disorders Eye Diseases Diabetes
171	<i>Mimulus orbicularis</i> Benth.	Scrophulariaceae	Verla kammi	Whole plant	wound healing
172	<i>Mitragyna parviflora</i> Korth.	Rubiaceae	Rudraganam	Stem bark	Other uses
173	<i>Momordica charantia</i> L.	Cucurbitaceae	Kaakara	Fruit	Diabetes Blood purifier. Diabetes.
174	<i>Moringa pterygosperma</i> Gaertn.	Moringaceae	Munaga	.Leaves	Antifertility
175	<i>Mucuna atropurpurea</i> DC.	Fabaceae	Dulagondi	Roots	Diarrhoea Diabetes Asthma.
176	<i>Mukiamaderaspatana</i> (L)M.Roem.	Cucurbitaceae	Nugudosa	Whole plant	Diarrhoea Tuberculosis Eczema. Eye ache Bronchitis
177	<i>Mussaenda frondosa</i> L.	Rubiaceae	Naagavalli	Leaves	Cough.
178	<i>Ocimum americanum</i> Sims.	Lamiaceae	Kukkatulasi	Leaves	Fever, Cold Bronchitis.
179	<i>Ocimum gratissimum</i> L.	Lamiaceae	Rama tulasi	Whole plant	Cough Arthritis Diabetes Earache, Toothache Indigestion.

180	<i>Ocimumtenuiflorum</i> L.	Lamiaceae	Krishna tulasi	Leaves	Diabetes Cold, cough Asthma, impotency Hypertension Ulcers Stomach disorders.
181	<i>Oplismenuscompositus</i> (L.) Beauv.	Poaceae	Kodi juttu gaddi	stem	Other uses
182	<i>Opuntia dillenii</i> Haw.	Cactaceae	Naagajemudu	Flower	Boils. Whooping cough Throat pain.
183	<i>Panicum ramosum</i> L.	Poaceae	Edeguru gaddi	stem	Other uses
184	<i>Panicum repens</i> L.	Poaceae	Laddi gaddi	stem	Other uses
185	<i>Parmelia sp.</i> (Huds) Ach	Parmeliaceae	Raatipaachi	Leaves	Other uses
186	<i>Passiflora foetida</i> L.	Passifloraceae	Tellajumiki	Leaves	Giddiness Headache. Asthma. Wounds.
187	<i>Phoenix sylvestris</i> (L.) Roxb.	Arecaceae	Peddaita	Leaves,	Other uses
188	<i>Phyllanthus emblica</i> L.	Phyllanthaceae	Usirikaya	Fruit	Gastric problems, Anaemia, Dysentery Liver problems.
189	<i>Phyllanthus polyphyllus</i> Willd.	Phyllanthaceae	Adaviusirika	Leaves	Jaundice.
190	<i>Phyllanthus amarus</i> Schum.	Phyllanthaceae	Nelausirika	Whole plant	Jaundice Diabetes.
191	<i>Phyllanthus virgatus</i> Forst.	Phyllanthaceae	Tokausirika	Leaves	Diabetes Jaundice Urinary Problem
192	<i>Plumbago zeylanica</i> L.	Plumbaginaceae	Tella chitramulam	Leaves	Ulcers Skin diseases.
193	<i>Podaxispistillaris</i> (L.) Fries.	Agaricaceae	Yerriputtakokku	Leaves	Skin diseases
194	<i>Pongamia pinnata</i> (L) Pier.	Fabaceae	Kanuga	Leaves	Skin diseses. Night blindness.

					Antidiabetic. Cough. KidneyStone, Abdominal painSnakebite
195	<i>Portulaca oleracea L.</i>	Portulacaceae	Peddapaayalaaku	Whole plant	Jaundice Cardiac diseases .Diabetes.
196	<i>Portulaca quadrifida L.</i>	Portulacaceae	Sannapaalaaku	Whole plant	Asthma cough Urinary problem
197	<i>Pouzolzia zeylanica (L).Benn&R.Br.</i>	Urticaceae	Eddu mooti dumpa	Whole plant	Sores, Snakebites.
198	<i>Premna tomentosa Willd.</i>	Verbenaceae	Naaguraaku	Stem bark	Abdominal pin
199	<i>Prosopis spicigera L.</i>	Fabaceae	Jammi	Stem bark	Diarrhoea Skin diseases cough.
200	<i>Pseudarthria viscida (L.) W&A.</i>	Fabaceae	Adavichikkudu	Roots	Asthma Diarrhoea
201	<i>Psidium guajava L.</i>	Myrtaceae	Jaama	Leaves	Diarrhoea Vomiting.
202	<i>Pterocarpus marsupium Roxb.</i>	Fabaceae	Yegisa	Gum	Diabetes StomachulcersDiarr hoea Skin diseases Pimples. Dysentery
203	<i>Pterospermum xylocarpum(Gaertn.) Sant&Wagh.</i>	Malvaceae	Loluguchettu	Leaves	Leucorrhoea.
204	<i>Pupalialappacea (L.) A.Juss.</i>	Amaranthaceae	Adaviuttareni	Root paste	Cuts, boils Fever. Bone fracture.
205	<i>Putranjivaroxburghii Wall.</i>	Putranjivaceae	Putra jeevika	Seed	Retention of pregnancy.
206	<i>Rhynchosia aurea DC.</i>	Fabaceae	Adavivulava		Other uses
207	<i>Ricinus communis L.</i>	Euphorbiaceae	Aamudamu	Leaves	Constipation, Arthritis, Spondilitis, Diabetes

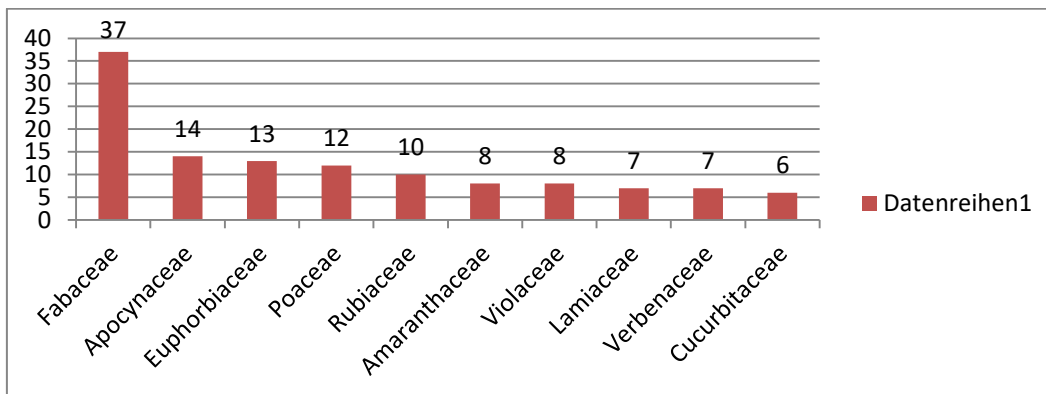
					Jaundice.
208	<i>Ruelliprostrata</i> Poir.	Acanthaceae	Adavikottimeera	Leaves	Gonorrhoea. Ear problems
209	<i>Sansevieraroxburghia</i> <i>na</i> Schult.	Amaryllidaceae	Seyanara	Leaves	Snakebite.
210	<i>Santalum album</i> L.	Santalaceae	Chandanamu	oil credited	Cooling Diaphoretic Burns Headache.
211	<i>Sapindusemarginata</i> <i>Vahl.</i>	Sapindaceae	Kunkudu	Fruit	Anthelmintic.
212	<i>Sarcostemma</i> <i>brevistig</i> <i>ma</i> W&A.	Apocynaceae	Pullajemudu	latex	Asthma. Toothache.
213	<i>Scilla hyacinthina</i> (Roxb) Macbride.	Liliaceae	Adavitellagadda	Bulb	Worm infestations
214	<i>Scoparia dulcis</i> L.	Scrophulariaceae	Dakshini	Whole plant	menstrual diseases.
215	<i>Senna auriculata</i> (L.) <i>Roxb.</i>	Fabaceae	Tangedu	Stem bark	Diabetes
216	<i>Senna occidentalis</i> <i>Roxb.</i>	Fabaceae	Kasinda	Leaves	Scorpion bite
217	<i>Sesamum indicum</i> L.	Pedaliaceae	Nuvvulu	Seeds	Skin diseases Body heat Sexual vigour Fertility in sterile women.
218	<i>Setaria verticillata</i> (L).Beauv.	Poaceae	Chiklenta gaddi	stem	Other uses
219	<i>Sida cordifolia</i> L.	Malvaceae	Tellagorra	Leaves	Urinary disorders.
220	<i>Smilax zeylanica</i> Linn.	Smilacaceae	Konda gurvateega	Root	Skinproblems
221	<i>Solanum</i> <i>americanum</i> Mill.	Solanaceae	Kamanchi	Leaves	Jaundice Anaemia Cough Liver disorders.
222	<i>Solanum</i> <i>virginianum</i> L.	Solanaceae	Naelavaakudu	Whole plant	Skin Diseases ToothProblems.
223	<i>Solanum torvum</i> Swartz.	Solanaceae	Konda vushti	Leaves	Wounds Cough Toothache.
224	<i>Spermococe hispida</i> L.	Rubiaceae	Madana	Leaves	Haemorrhoids.

225	<i>Striga asiatica</i> (L) Kuntz.	Scrophulariaceae	Raatibadanika	Whole plant	Snake bites
226	<i>Strychnos nux vomica</i> L.	Loganiaceae	Mushti	Root	Epilepsy Ringworm Rheumatic Pains
227	<i>Strychnos potatorum</i> L.	Loganiaceae	Chinna Mushti	Stem bark	Diabetes Gonorrhoea Kidney stone.
228	<i>Stylosanthes fruticosa</i> (Retz) Alston.	Fabaceae	Salla kampa	Whole plant	Fever. Iarrhoea Cold.
229	<i>Tamirindus indica</i> L.	Fabaceae	Chinta	Seed powder	Diarrhoea antidote
230	<i>Tectona grandis</i> L.f	Verbenaceae	Teku	Wood powder	Leprosy Diabetes Skin diseases
231	<i>Tephrosia purpurea</i> (L.) Pers.	Fabaceae	Vempali	Whole plant	Bronchitis cough Boils, pimples jaundice kidney disorders.
232	<i>Terminalia arjuna</i> W&A.	Combretaceae	Tella Maddi	Leaves	Leucoderma
233	<i>Terminalia chebulaa</i> Retz.	Combretaceae	Kaakarakaya	Fruit	Diabetes Jaudice Cough Obesity
234	<i>Thespesia populnea</i> Cav.	Malvaceae	Gangiraavi	Leaves	Joint pain. Cough. Antidote
235	<i>Tinospora cordifolia</i> Miers.	Menispermaceae	Tippateega	Leaves	Jaundice
236	<i>Tragia cannabina</i> L.f	Euphorbiaceae	Gogugondi	Leaves	Jaundice
237	<i>Trema orientalis</i> (L). Blume.	Ulmaceae	Konda jonna	Root	Epilepsy.
238	<i>Trianthem portulacast rum</i> L.	Aizoaceae	Nelagalijeru	Leaves	Asthma.
239	<i>Tribulus terrestris</i> L.	Zygophyllaceae	Chinnapalleru	Leaves	Jaundice kidney stone.

					Rheumatic pains
240	<i>Tricholoma gigantea</i> . Massee	Agaricaceae	Puttagodugu	fruit	Edible
241	<i>Tridax procumbens</i> L.	Asteraceae	Gaddi chamanti	Leaves	Skin diseases Eye diseases cuts and wounds. Jaundice
242	<i>Tylophoraasthmatica</i> W&A.	Apocynaceae	Kakapaala	Root	Asthma Bbronchitis Snakebite
243	<i>Urginea indica</i> (Roxb.) Kunth.	Liliaceae	Adaviyerragadda	Bulb	Cough and Rheumatic
244	<i>Vanda tessellata</i> Hook ex G.Don.	Orchidaceae	Saga vegabadanika	Leaves,	Earache
245	<i>Viscum articulatum</i> Burm.f.	Loranthaceae	Kaada Badanika	Whole plant	Cuts, wounds fever Increase Sexual vigour
246	<i>Vitex altissima</i> L.f	Verbenaceae	Nemiladugu	Stem bark	Fever.
247	<i>Vitex negudo</i> L.	Verbenaceae	Tellavaavili	Whole plant	Cough Cold Body pains
248	<i>Waltheria indica</i> L.	Malvaceae	Nalla benda	Whole plant	Wound healing Skin diseases.
249	<i>Ziziphus mauritiana</i> Lam.	Rhamnaceae	Regu	seed	Diabetes, Aasthma Piles

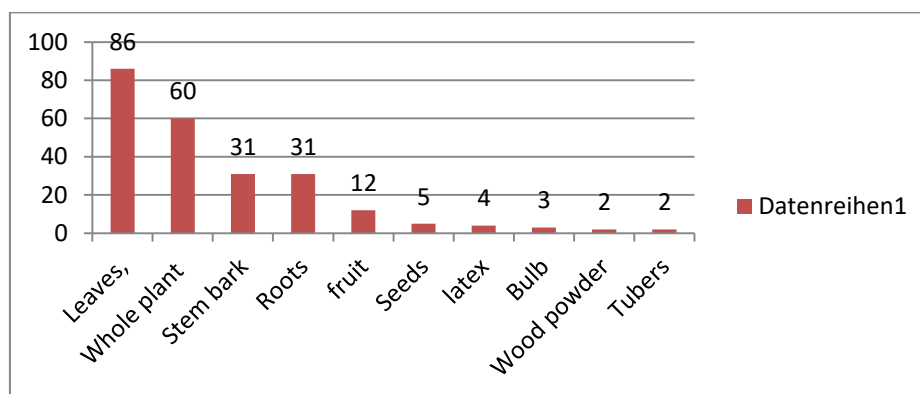
RESULTS AND DISCUSSION

The present study encompasses the in-depth investigation on medicinal plants which are used in by the local healers in the district of Vikarabad, Telangana state. An attempt is made to gather information from the Tribal communities. These communities are directly interlinked with nature and having symbiotic relationship with the medicinal plants in the region. The author has recorded 250plant species belonging to 80families Angiospermic families of medicinal plants which are used by the herbal practitioners for treating health care applications Fabaceae is the dominant one with 37 plant species Apocynaceae .Euphorbiaceae, Poaceae, Rubiaceae. Amaranthaceae, Verbenaceae, Cucurbitaceae,



Graph No.1 showing No. of species from some families

The Traditional botanical data obtained from local people revealed that 113 diseases find curative chemical constituents in 250 plant species. It was observed that the number of plant species to cure skin diseases occupy the first place followed by Antidote, Cough, Dental care Diabetes, Diarrhoea, Febrifuge, Jaundice, Leucorrhoea Rheumatic pains Urinary disorders. Asthma The remaining plant species of accounted for the cure of remaining 100 diseases allergy, burns, cancer, cuts, dandruff, epilepsy, hair growth, impotency, lactoguesleucoderma, obesity, purgatives, sexual vigour (aphrodisiac), The bone fractures, tuberculosis, wounds, and various other diseases also find curative chemicals in the medicinal plants documented from the study site.



Graph No.2 showing Plants parts used

CONCLUSION

The country has a number of alternative medicines, like Ayurveda, Unani, Siddha and Homeopathic systems which are predominantly based on plant based raw materials in most of their preparations and formulations. Herbal preparations for various purposes including pharmaceutical and cosmetic form part of traditional biodiversity uses in India. India is one of the twelve mega biodiversity countries in the world representing 6.5 percent of world’s know wildlife and 12 percent of plant life. Of this ten percent of flora is on the verge of extinction, and many more are on the threatened list while some of them are already rare of disappeared due to in hospitable atmosphere created by man to the plants.

REFERENCES:

- [1]. Hemalatha, P. and B.V. Subba Reddy. The folk medical practices among a Tribe of Andhra Pradesh. Bull. Of Indian Inst. Hist. Med. New Delhi, pp. 39-44, 1982
- [2]. Jain S.K .A Manual of ethnobotany, 2nd edetion,Scientific Publishers, Jodhpur, 1995.
- [3]. Jain S.K & Mudgal V. A Hand book of Ethnobotany, Bishen Singh &Mahandra Pal Singh, Dehra Dun, 1999.
- [4]. Madhavacetty.K., L.Ramesh., K.M.Ranjalkar et.al. Flowering plants of Chitoor District Andhra Pradesh, India. Students offset Publishers, Tirupati, 2019.
- [5]. Padma Rao & Ramachandra Reddy. P. Ethnomedical survey on plant drugs for cattle from Ranga Reddy District Andhra Pradesh, J Swamy Bot Club, 17-39, 2000.
- [6]. Pullaiah T & Silar Moammed. M. Flora of Rangareddy District, Regency Pulications, New Delhi,1999.
- [7]. Rai L. K, Prasad Pankaj and Sharma. E. Biological Conservation, (93), 27-33, 2000
- [8]. Ramachandra Reddy. P and Padma Rao. P. Survey of Plant crude drugs in folklore from Ranga Reddy district, Andhra Pradesh, India. Indian Journal of Traditional Knowledge, Vol.1 (1), pp 20-25,2002.
- [9]. Ramakrishna. N., 2013. Ethno Botanical studies of Adilabad distric, A.P. Ph. D Thesis OsmaniaUniversity, 2013.